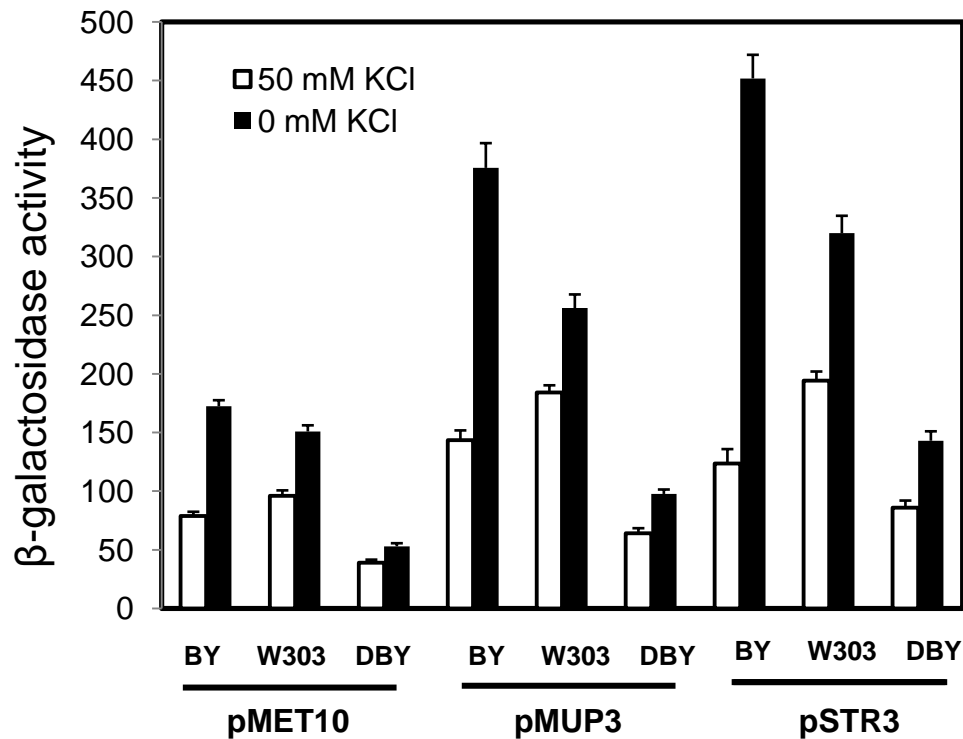
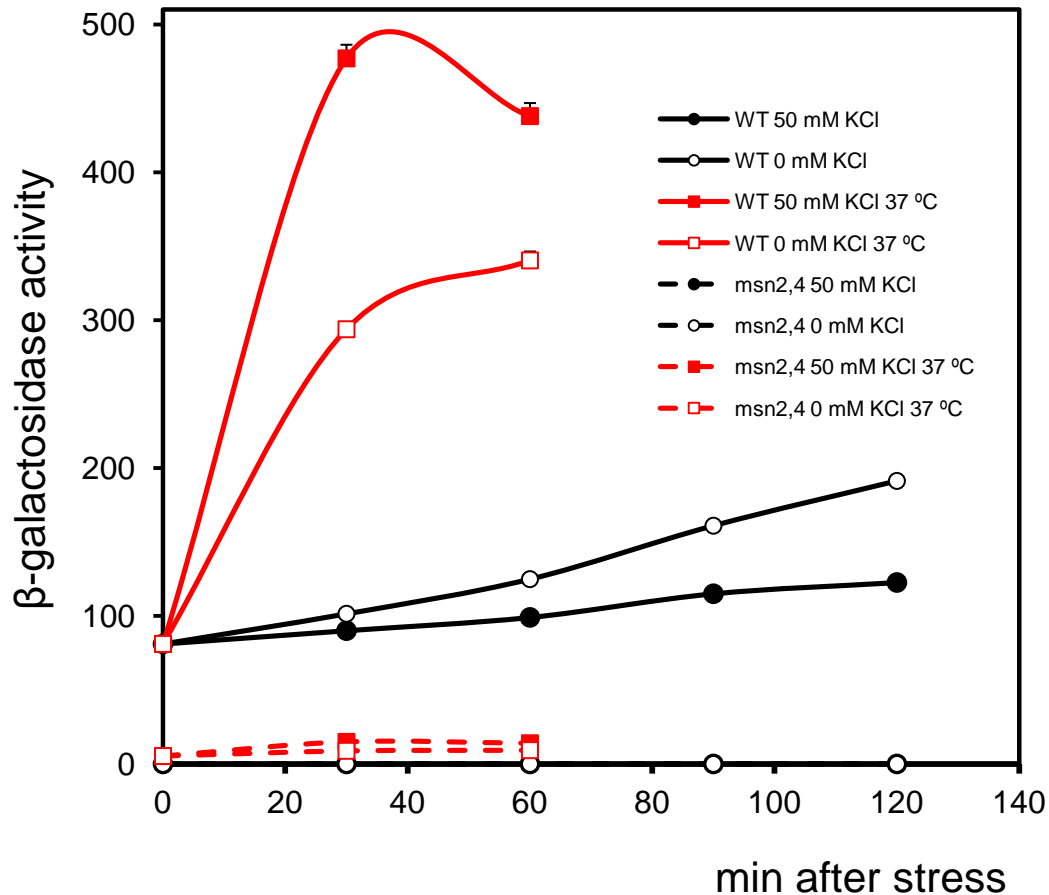


Supplementary Figure 1.- Potassium starvation activates the expression of genes related to the metabolism of sulfur-containing amino acids. (A) BY4741 wild type strain was transformed with reporter YEp357-based plasmids containing the entire promoters of indicated genes, transferred to K⁺-free medium for 2 h and processed for measurement of β -galactosidase activity as described in Materials and Methods. (B) Methionine supplementation attenuates the induction of sulfur-related genes upon potassium starvation. The BY4741 wild type strain was transformed with indicated reporters and processed as above except that cells containing the pPHO84 reporter were collected after 90 min of potassium starvation. For this experiment the standard Translucent K⁺-free medium, which contains 20 mg/l of Methionine (open bars) was made 40 mg/l (stripped bars) or 80 mg/l (closed bars). Data are mean \pm SEM from 3 to 5 experiments.



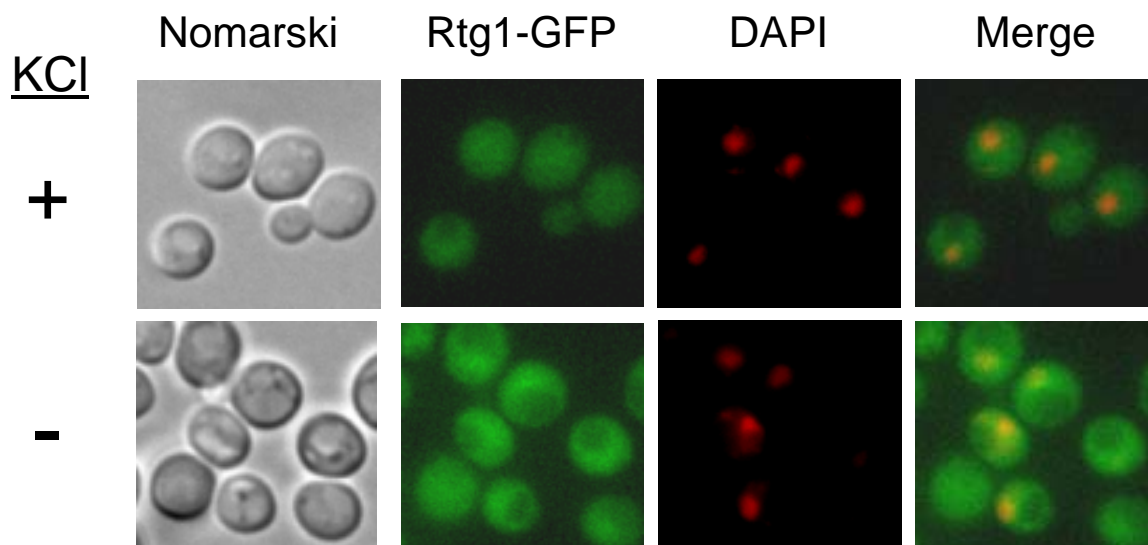
Supplementary Figure 2.- Induction of sulfur-related genes is also observed in *MET17* strains. Wild type strains BY4741 (BY, *met17*, data from Supp. Figure 1A), W303-1A (W303, *MET17*) and DBY746 (DBY, *MET17*) were transformed with the indicated reporters and processes as in Supp. Figure 1A for β -galactosidase assay. Data are mean \pm SEM from 3 to 5 experiments.



Supplementary Figure 3.- STRE-mediated promoter activation response to potassium starvation. Wild type strain W303-1A and its *msn2 msn4* derivative (MCY5278, a generous gift from M. Carlson, Casado *et al.*, 2011), were transformed with plasmid pGM18/17 (Marchler *et al.*, 1993) allowing the integration of a (7x)STRE-LacZ element at the *URA3* locus. The strains were transferred for the indicated times to Translucent K⁺-free medium either at room temperature or at 37°C (to induce a heat-shock response) and β -galactosidase activity measured. Data are mean \pm SEM from 3 independent experiments performed by triplicate.

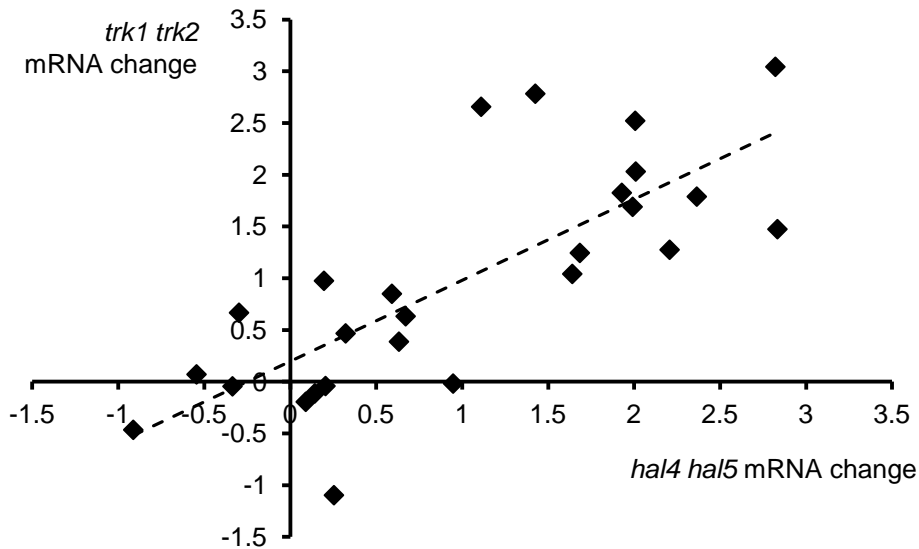
Casado,C., Gonzalez,A., Platara,M., Ruiz,A., and Arino,J. (2011). The role of the protein kinase A pathway in the response to alkaline pH stress in yeast. *Biochem. J.* 438, 523-533.

Marchler,G., Schuller,C., Adam,G., and Ruis,H. (1993). A *Saccharomyces cerevisiae* UAS element controlled by protein kinase A activates transcription in response to a variety of stress conditions. *EMBO J.* 12, 1997-2003.



Supplementary Figure 4.- Strain JC37-1A, which expresses a Rtg1-GFP version (Crespo *et al*, 2002), was grown to exponential phase in K⁺-free medium (without ammonium sulphate and containing 5 mM glutamine as nitrogen source) supplemented with 50 mM KCl. Cells were washed and resuspended either in fresh medium with (+) or without (-) 50 mM KCl. One ml samples were taken at different times (only results after 20 min are shown). Cells were fixed with 2 % formaldehyde, harvested by centrifugation, washed 2 times with phosphate-buffered saline (PBS) solution, stained with 0.1 mg/ml DAPI (4',6-diamidino-2-phenylindole) and finally resuspended in PBS. Samples were observed by using a Nikon Eclipse E800 fluorescence microscope and a FITC filter.

Crespo, J.L., Powers, T., Fowler, B., and Hall, M.N. (2002). The TOR-controlled transcription activators GLN3, RTG1, and RTG3 are regulated in response to intracellular levels of glutamine. *Proc. Natl. Acad. Sci. U. S. A* 99, 6784-6789.



Supplementary Figure 5.- Comparison of transcriptional changes in *trk1 trk2* and *hal4 hal5* mutants. The change in mRNA levels (log₂ space) for genes related to sulfur metabolism presented in Figure 2B in the main text, plus *CIT2* and *DLD3*, were plotted. Y axis represents data from this work, whereas X axis represents data from Perez-Valle et al., 2010. The calculated correlation coefficient was 0.768.

Perez-Valle, J., Rothe, J., Primo, C., Martinez, P.M., Arino, J., Pascual-Ahuir, A., Mulet, J.M., Serrano, R., and Yenush, L. (2010). Hal4 and Hal5 protein kinases are required for general control of carbon and nitrogen uptake and metabolism. *Eukaryot. Cell* 9, 1881-1890.

Supplemental Table 1. Oligonucleotides used in this work.

a) Oligonucleotides for LacZ reporter construction

Name	Sequence	Description
5'promCYS4	GGAATTCGTCTAATTTAGCTGAAG	5' promoter <i>CYS4</i> (-960 pb, added EcoRI)
3'promCYS4	AGACTGCAGCTTAGCATAAATTTGTG	3' promoter <i>CYS4</i> (+71 pb added PstI)
5'promMET6	GGAATTCGGGTACTTTCTCTAC	5' promoter <i>MET6</i> (-923 pb, added EcoRI)
3'promMET6	CACAAGCTTGAATAATTCATCGACAG	3' promoter <i>MET6</i> (+ 92 pb, added HindIII)
5'promMET10	GGAATTCCTCGACAGAAAGGGGA	5' promoter <i>MET10</i> (-437 pb, added EcoRI)
3'promMET10	AGACTGCAGCACAGATGAAATGGCA	3' promoter <i>MET10</i> +80 pb added PstI)
5'promMUP3	GGAATTCACTCACGTGAGGGC	5' promoter <i>MUP3</i> (-471 pb, added EcoRI)
3'promMUP3	CGGGATCCAGTATTTGTGGAACCAT	3' promoter <i>MUP3</i> (+89 pb, added BamHI)
5'promSAM3	GGAATTCAACGAAGTATTGGTG	5' promoter <i>SAM3</i> -700 pb, added EcoRI)
3'promSAM3	AGACTGCAGTGAACCAGATCTATCC	3' promoter <i>SAM3</i> (+ 80 pb, added PstI)
5'promSER3	ACGGTACCTCATTCAACTGTATAG	5' promoter <i>SER3</i> (-804 pb, added KpnI)
3'promSER3	GCTCTAGATTGCGTAGGTGAAGTAC	3' promoter <i>SER3</i> (+ 80pb, added XbaI)
5'promSTR3	GGAATTCATGCACTATACACGAAA	5' promoter <i>STR3</i> (-528 pb, added EcoRI)
3'promSTR3	CGGGATCCCAGTCTGGAATAATC	3' promoter <i>STR3</i> (+ 153 pb, added BamHI)
5'promSUL2	GGAATTCATGACGAGACTGTAGA	5' promoter <i>SUL2</i> (-481 pb, added EcoRI)
3'promSUL2	ACAGTCGACGGTGTGTTAGTTTCC	3' promoter <i>SUL2</i> (+50 pb, added Sall)

b) Oligonucleotides for RT-PCR

Name	Sequence	Description
CLN2_Fw	CAAGGAAAACCAAATCCC	5' oligo for RT-PCR, <i>CLN2</i> gene
CLN2_Rev	TACTTGGGTATTGCCCATAC	3' oligo for RT-PCR, <i>CLN2</i> gene
CLN3_Fw	CTGTGCGTTCAAAAAGATTA	5' oligo for RT-PCR, <i>CLN3</i> gene
CLN3_Rev	AGCGAGTTTTCTTGAGGTTG	3' oligo for RT-PCR, <i>CLN3</i> gene
CLB1_Fw	GGTGGTTACACAAAGGCAAA	5' oligo for RT-PCR, <i>CLB1</i> gene
CLB1_Rev	TCACTCATGCAATGTCATAA	3' oligo for RT-PCR, <i>CLB1</i> gene
CLB2_Fw	CCCGTGTGTCACATGATAAT	5' oligo for RT-PCR, <i>CLB2</i> gene
CLB2_Rev	AAGGTCATTATATCATAGCCG	3' oligo for RT-PCR, <i>CLB2</i> gene
CLB5_Fw	TGGCAGTTACCTCACTTTTCA	5' oligo for RT-PCR, <i>CLB5</i> gene
CLB5_Rev	ATTCTAAGGAAGTGAGCATGAAC	3' oligo for RT-PCR, <i>CLB5</i> gene
CLB6_Fw	TGCCTGTTTCATTGCCTGTA	5' oligo for RT-PCR, <i>CLB6</i> gene
CLB6_Rev	GGGTTTGGTAGAGATATGTT	3' oligo for RT-PCR, <i>CLB6</i> gene
CIT2_5_RT	TTGCCATGGACATTTTCCA	5' oligo for RT-PCR, <i>CIT2</i> gene
CIT2_3_RT	GCCCTTGAAACGCCAAATAA	3' oligo for RT-PCR, <i>CIT2</i> gene
5'_DLD3_RT	AAGTCAGAGATTTTGATCCA	5' oligo for RT-PCR, <i>DLD3</i> gene
3'_DLD3_RT	TCTTCCAAACCCAAAACATT	3' oligo for RT-PCR, <i>DLD3</i> gene
RT_ACT1_up2	TGCTGTCTTCCCATCTATCG	5' oligo for RT-PCR, <i>ACT1</i> gene
RT_ACT1_do2	ATTGAGCTTCATCACCAAC	3' oligo for RT-PCR, <i>ACT1</i> gene

Genes induced by potassium starvation (log(2) values)

ID	NAME	10min	20min	40min	60min	120 min
YAL008W	FUN14	0.002	0.041	0.847	1.166	0.645
YAL012W	CYS3	0.509	0.578	1.328	1.643	1.756
YAL017W	PSK1	0.059	0.146	0.757	1.782	0.777
YAL027W	SAW1	0.615	0.003	0.742	0.319	1.783
YAL028W	FRT2	0.568	-0.229	1.047	1.843	2.379
YAL031C	GIP4	0.418	0.006	0.381	0.766	1.168
YAL040C	CLN3	0.587	0.312	0.829	1.554	1.878
YAL051W	OAF1	0.142	0.084	0.161	0.857	1.053
YAL060W	BDH1	0.395	0.401	1.218	1.784	1.637
YAL062W	GDH3	-0.230	0.175	0.104	0.918	1.015
YAL063C	FLO9	-0.138	0.110	-0.254	1.007	0.359
YAR027W	UIP3	-0.338	-0.134	0.729	0.971	1.095
YAR028W		-0.777	-0.509	0.906	1.778	2.824
YAR031W	PRM9	0.112	0.081	0.177		1.161
YAR042W	SWH1	0.441	-0.085	0.321	-0.304	1.119
YAR050W	FLO1	-0.512		-0.581	1.280	0.179
YAR071W	PHO11	1.485	1.572	1.952	1.667	1.667
YBL015W	ACH1	1.892	1.324	2.322	3.618	2.349
YBL016W	FUS3	0.472	0.769	1.012	1.921	1.588
YBL043W	ECM13	0.202	0.169	0.481	-0.247	1.283
YBL045C	COR1	0.491	0.523	0.902	2.208	0.503
YBL062W		0.076	0.670	0.275		1.018
YBL064C	PRX1	0.253	0.491	1.747	2.083	2.215
YBL078C	ATG8	0.152	0.090	1.620	3.802	3.111
YBL086C		0.309	-0.082	0.695	1.117	0.591
YBL095W		0.127	0.168	0.486	-0.318	1.283
YBL101C	ECM21	-0.014	-0.007	0.785	0.763	1.313
YBR001C	NTH2	-0.169	-0.704		1.393	1.032
YBR006W	UGA2	0.394	0.158	1.200	4.064	1.445
YBR012C		-0.017		1.759	2.325	1.910
YBR026C	ETR1	-0.079	0.112	0.606	1.065	0.706
YBR040W	FIG1	0.831	0.254	0.523	0.106	1.749
YBR045C	GIP1	0.113	0.009	-0.081		1.716
YBR052C	RFS1	-0.370	-0.078	0.796	1.031	0.401
YBR053C		0.104	0.155	1.206	1.955	1.244
YBR054W	YRO2	1.835	2.359	3.214	4.183	3.598
YBR056W		0.097	0.031	1.058	1.801	0.917
YBR059C	AKL1	-0.283	-0.108	0.518	1.070	0.525
YBR065C	ECM2	0.028	0.134	0.140	0.577	1.057
YBR066C	NRG2	-0.034	-0.151	0.440	1.578	1.452
YBR067C	TIP1	0.451	0.337	1.053	1.335	2.063
YBR072W	HSP26	-2.915	-1.553	1.164	4.109	4.661
YBR083W	TEC1	0.454	0.614	0.913	1.682	2.466
YBR085W	AAC3	0.387	0.022	0.477	-0.015	1.368
YBR093C	PHO5	1.567	1.638	2.171	2.356	2.463
YBR096W		-0.423	-0.405	0.247	0.798	1.540
YBR098W	MMS4	0.200	-0.759	0.316	-0.662	2.247

YBR105C	VID24	0.012	0.003	0.611	1.279	1.710
YBR108W		0.338	0.114	0.771	1.113	0.671
YBR114W	RAD16		-0.246	-0.387	0.878	1.245
YBR117C	TKL2	1.237		1.770	4.028	3.895
YBR126C	TPS1	0.755	0.399	1.853	2.731	1.501
YBR132C	AGP2	0.592	0.479	0.983	1.640	0.657
YBR139W		0.175	-0.180	0.466	1.112	0.563
YBR145W	ADH5	0.832	1.347	1.800	1.559	1.228
YBR147W		0.150	0.356	0.587	0.617	1.482
YBR161W	CSH1	0.615	0.410	0.788	1.081	1.138
YBR165W	UBS1	0.401	0.130	0.434	-0.171	1.028
YBR166C	TYR1	0.116	-0.055	0.253	-0.123	1.023
YBR169C	SSE2	0.719	0.362	1.645	3.184	1.958
YBR170C	NPL4	-0.070	-0.005	0.498	1.480	0.788
YBR183W	YPC1	0.777	0.307	1.121	1.089	1.369
YBR204C		0.291	0.219	0.618	1.247	1.019
YBR211C	AME1	0.400	0.105	0.536	-0.430	1.388
YBR212W	NGR1	0.108	-0.282	0.421	1.118	0.632
YBR214W	SDS24	0.725	0.186	1.274	1.646	1.067
YBR216C	YBP1	0.110	0.087	0.373	1.082	0.647
YBR222C	PCS60	0.414	0.542	0.967	1.509	1.691
YBR223C	TDP1	0.321	0.196	0.445	1.242	0.391
YBR225W		0.459	0.190	0.694	1.516	1.271
YBR230C	OM14	-0.300	-0.208	1.107	1.532	1.009
YBR237W	PRP5	-0.218	-0.053	-0.060	1.047	0.782
YBR241C		0.047	0.109	0.802	1.337	1.218
YBR256C	RIB5	-0.111	0.222	0.612	0.881	1.165
YBR269C		0.076	0.195	0.742	1.196	1.167
YBR284W		-0.122	-0.726		1.996	1.285
YBR285W		-0.853		0.542	3.395	2.233
YBR287W		0.544	0.353	1.120	1.510	1.265
YBR293W	VBA2	0.236	0.590	0.480	0.861	1.556
YBR294W	SUL1	0.098	0.127	0.664	2.700	3.354
YBR297W	MAL33	0.602	0.633	0.898	2.056	2.329
YCL014W	BUD3	0.361	-0.175	0.368	-0.631	1.115
YCL020W		0.735	0.380	0.849	0.509	1.581
YCL021W-A		-0.483	-0.017	-0.506		0.997
YCL027C-a		-1.174		1.484	3.376	2.629
YCL027W	FUS1	1.026	1.160	1.732	2.458	2.985
YCL030C	HIS4	0.594	1.130	1.642	2.340	1.683
YCL035C	GRX1	-0.007	-0.013	1.118	1.504	1.508
YCL040W	GLK1	0.644	0.293	1.882	2.785	1.310
YCL048W	SPS22		1.216	1.401	2.192	1.375
YCL049C		0.152	-0.057	0.430	0.192	1.089
YCL055W	KAR4	0.362	0.813	1.227	1.764	2.677
YCL059C	KRR1	0.188	0.038	-0.617	-0.722	1.494
YCLX07W		0.467	0.772	0.976		2.104
YCR005C	CIT2	2.689	3.661	3.358	5.610	4.342
YCR009C	RVS161	0.374	0.259	0.862	1.534	1.010
YCR021C	HSP30	1.140	0.666	2.053	3.966	3.192

YCR051W		0.398	0.255	1.007	1.169	1.712
YCR082W	AHC2	-0.054	-0.145	0.337	0.767	1.025
YCR083W	TRX3	0.445	0.153	0.839	1.183	2.182
YCR089W	FIG2	0.653	0.140	0.436	2.100	3.348
YCR091W	KIN82	0.678	-0.334	0.680	2.284	1.618
YDL006W	PTC1	0.035	-0.208	-0.465	1.547	0.749
YDL014W	NOP1	0.541	0.249	1.698	1.990	1.255
YDL022W	GPD1	0.829	0.684	1.648	1.436	-0.189
YDL023C		0.914	0.722	1.715	2.012	-0.007
YDL027C		0.394	0.200	0.593	1.241	0.886
YDL054C	MCH1	-0.823	-0.020	0.080		1.088
YDL059C	RAD59	0.626	0.719	1.570	2.804	2.446
YDL072C	YET3	0.089	-0.028	0.642	1.011	0.837
YDL079C	MRK1	-0.065	-0.274	0.093	1.492	2.528
YDL085W	NDE2	-0.207	0.237	0.489	1.561	2.002
YDL113C	ATG20	0.290	0.293	0.609	1.473	0.935
YDL115C	IWR1	0.156	0.143	0.589	0.931	1.031
YDL124W		0.417	0.339	1.588	2.021	1.268
YDL127W	PCL2	-0.099	0.090	-0.213	0.207	1.161
YDL142C	CRD1	-0.007	0.234	0.305	1.056	1.376
YDL147W	RPN5	0.154	-0.060	0.441	1.145	0.805
YDL149W	ATG9	0.076	-0.082	0.250	1.247	1.376
YDL174C	DLD1	0.152	0.249	0.390	1.172	1.008
YDL181W	INH1	-0.091	0.174	0.706	1.340	
YDL204W	RTN2	0.821	0.104	1.405	2.409	1.784
YDL210W	UGA4	-0.106	-0.069	-0.017		1.017
YDL215C	GDH2	0.388	0.360	0.867	1.460	2.173
YDL220C	CDC13	0.411	-0.105	0.165	-0.859	1.203
YDL222C	FMP45	1.309	-0.288	2.840	3.978	3.365
YDL223C	HBT1	-0.133	-0.223	0.363	2.169	3.127
YDL234C	GYP7	0.497	-0.194	0.245	1.795	1.254
YDL240W	LRG1	0.423	0.119	0.493	0.840	1.296
YDR001C	NTH1	0.817	0.215	1.209	2.161	1.582
YDR003W	RCR2	-0.387	-0.143	0.592	1.228	1.057
YDR022C	CIS1	-1.335		0.206	1.345	0.771
YDR031W	MIC14	0.163	-0.371	-0.084		1.229
YDR033W	MRH1	0.804	0.444	0.726	1.023	0.372
YDR043C	NRG1	0.818	0.470	1.645	2.482	3.121
YDR046C	BAP3	0.261	1.019	0.096	0.191	-0.913
YDR055W	PST1	0.480	-0.227	0.580	2.662	2.220
YDR058C	TGL2	1.023	0.090	0.408	1.331	1.388
YDR059C	UBC5	-0.431	-0.670	0.395	1.076	1.162
YDR067C		-0.086	0.229	0.469	1.051	1.089
YDR074W	TPS2	1.676	-0.074	2.111	2.724	1.410
YDR096W	GIS1	0.869	-0.596	0.925	1.849	0.755
YDR122W	KIN1	-0.173	-0.160	0.516	1.097	0.949
YDR129C	SAC6	0.249	-0.106	0.252	1.053	-0.394
YDR148C	KGD2	0.443	0.287	0.555	1.103	0.247
YDR168W	CDC37	0.292	0.209	0.270	1.140	-0.027
YDR171W	HSP42	0.378	0.084	1.145	1.725	0.943

YDR178W	SDH4	0.387	0.325	1.272	1.597	1.759
YDR216W	ADR1	1.306	1.364	0.664	2.641	2.028
YDR230W		-0.065	-0.407	0.457	0.412	1.104
YDR231C	COX20	-0.099	-0.409	0.481	0.855	1.425
YDR247W	VHS1	1.322	-0.143	1.481	2.873	2.884
YDR248C		0.246	0.455	0.861	1.415	0.295
YDR251W	PAM1	0.166	-0.064	0.430	1.142	0.759
YDR253C	MET32	0.292		1.225	2.530	2.210
YDR254W	CHL4	-0.439	-0.146	-0.008	1.160	0.528
YDR258C	HSP78	0.422	0.272	1.764	2.820	1.253
YDR261C	EXG2	0.199	0.021	0.409	0.952	1.064
YDR262W		0.334	0.332	0.876	1.378	2.117
YDR272W	GLO2	-0.042	0.080	0.530	1.204	0.788
YDR293C	SSD1	0.168	-0.165	0.658	1.645	1.324
YDR330W	UBX5	0.243	0.041	0.442	1.169	0.283
YDR335W	MSN5	-0.134	-0.087	0.502	1.002	0.626
YDR342C	HXT7	0.144	0.541	-0.046	0.849	1.406
YDR343C	HXT6	0.245	0.218	0.380	-0.050	1.147
YDR345C	HXT3	0.533	1.086	-0.308	0.206	0.684
YDR350C	ATP22	0.069	0.037	0.172	1.105	0.973
YDR358W	GGA1	0.688	0.120	1.046	1.938	1.184
YDR368W	YPR1	0.298	0.221	0.698	1.169	0.645
YDR379W	RGA2	0.144	0.091	0.169	1.174	0.902
YDR391C		0.409	0.234	1.266	1.980	1.674
YDR394W	RPT3	-0.036	-0.235	0.288	1.032	0.242
YDR409W	SIZ1	0.434	-0.066	0.539	-0.507	1.055
YDR436W	PPZ2	0.219	-0.134	0.815	1.586	1.007
YDR453C	TSA2	0.625	0.425	1.960	2.818	3.189
YDR474C		0.317	0.401	0.690	1.249	0.736
YDR479C	PEX29	0.217	0.468	0.629	1.106	0.677
YDR481C	PHO8	0.919	1.067	1.402	1.861	1.968
YDR502C	SAM2	0.990	0.799	1.273	1.807	-0.272
YDR516C	EMI2	0.307	0.273	0.742	1.863	0.887
YDR530C	APA2	0.968	0.541	1.115	2.459	2.506
YDR533C	HSP31	0.068	0.135	1.009	1.903	2.432
YEL005C	VAB2	0.161	0.129	0.506	-0.195	1.161
YEL011W	GLC3	0.357	0.000	1.664	3.366	2.546
YEL012W	UBC8	0.047	0.089	0.777	1.498	1.029
YEL020C		0.270	-0.023	0.295	1.242	0.485
YEL024W	RIP1	0.080	0.282	0.712	1.073	0.674
YEL039C	CYC7	0.024	-0.707	0.905	2.004	1.003
YEL044W	IES6	0.210	0.117	0.628	1.008	1.135
YEL045C		-0.258	-0.263	0.052	0.558	1.253
YEL060C	PRB1	0.493	-0.030	1.332	2.366	1.647
YEL071W	DLD3	1.481	2.242	1.989	3.006	2.622
YER020W	GPA2	0.228	0.068	0.715	1.548	1.056
YER035W	EDC2	-0.141	-0.150	1.074	1.275	0.453
YER037W	PHM8	0.706	0.481	1.235	1.214	1.631
YER039C	HVG1	0.166	0.046	0.461	-0.536	1.077
YER042W	MXR1	0.656	1.227	1.887	2.746	2.475

YER045C	ACA1	0.178	0.096	0.345		1.038
YER052C	HOM3	0.748	1.007	1.464	1.589	1.529
YER053C	PIC2	0.848	0.284	1.858	2.934	2.517
YER054C	GIP2	0.299	-0.670	0.815	2.319	1.739
YER062C	HOR2	0.042	0.312	1.026	0.842	0.472
YER067W		1.550	0.498	2.435	4.576	4.058
YER072W	VTC1	0.422	0.603	1.010	0.754	1.695
YER078C		0.071	0.099	0.437	1.094	0.240
YER079W		0.348	0.280	1.310	1.061	0.940
YER081W	SER3	1.475	1.357	3.274	4.103	3.536
YER087W		0.146	0.120	0.541	1.512	0.956
YER088C	DOT6	0.407	0.078	0.465	0.484	1.089
YER091C	MET6	1.600	1.349	2.232	2.547	1.799
YER092W	IES5	0.229	0.783	0.952	1.598	1.389
YER098W	UBP9	0.308	0.110	0.477	2.419	1.305
YER103W	SSA4	-1.982	-0.829	1.721	4.018	2.932
YER115C	SPR6	0.186	0.577	0.511	0.092	1.082
YER116C	SLX8	0.091	0.163	0.512	-0.263	1.033
YER125W	RSP5	1.071	0.773	1.218	1.837	1.276
YER138C		0.223	0.066	0.275	1.598	0.584
YER143W	DDI1	0.046	0.049	0.575	1.022	0.334
YER150W	SPI1	0.023	0.244	2.201	3.257	3.436
YER158C		0.297	-0.456	0.645	1.499	1.176
YER159C	BUR6	0.514	0.422	0.705	1.065	1.139
YER160C		0.223	0.021	0.303	1.698	0.816
YER162C	RAD4	0.081	0.098	0.491	2.208	0.594
YER163C		-0.114	0.087	0.765	1.338	1.044
YER169W	RPH1	-0.220	-0.106	0.254	2.377	0.930
YER175C	TMT1	0.268	0.957	1.721	1.241	1.509
YER182W		0.585	0.181	0.660	0.584	1.060
YFL014W	HSP12	-1.729	-1.385	1.171	1.306	1.639
YFL015C		0.145	0.592	1.687	2.622	2.726
YFL016C	MDJ1	0.224	-0.045	0.718	1.635	0.400
YFL028C	CAF16	0.233	0.218	0.499	0.464	1.063
YFL032W		-0.163	0.152	0.275	0.149	1.667
YFL042C		0.469	0.148	0.590	1.304	0.582
YFL053W	DAK2	0.057	0.184	-0.023	0.181	1.435
YFL054C		0.203	-0.216	0.609	2.032	2.141
YFL055W	AGP3	-0.040	0.185	0.498	1.853	2.426
YFL056C	AAD6		-0.065	-0.645	1.819	2.079
YFL058W	THI5	-1.223	0.159	-0.094		1.558
YFR003C	YPI1	0.186	0.251	1.104	1.792	1.570
YFR014C	CMK1	0.243	0.054	0.595	0.203	1.056
YFR015C	GSY1	0.131	-0.502	0.619	2.051	0.409
YFR016C		-0.195	-0.086	0.202	1.401	0.230
YFR017C		0.307	0.066	0.661	0.807	1.283
YFR020W		0.366	-0.074	0.405	-0.408	1.229
YFR022W	ROG3	-0.205	0.234	0.673	1.854	1.755
YFR030W	MET10	0.970	1.187	2.752	4.036	4.427
YFR033C	QCR6	0.062	0.675	0.740	1.026	0.549

YFR043C	IRC6	0.217	0.145	0.572	-0.330	1.160
YFR047C	BNA6	0.137	0.274	0.622	0.756	1.231
YFR053C	HXK1	1.866	1.499	2.074	3.021	1.950
YFR054C		0.517	0.142	0.788	0.395	1.355
YGL005C	COG7	0.289	0.144	0.537	-0.414	1.034
YGL006W	PMC1	0.222	-0.002	0.549	1.293	0.930
YGL010W		-0.749	-0.528	0.521		1.311
YGL015C		-0.188	-0.276	1.070	1.925	1.590
YGL032C	AGA2	0.531	0.604	1.349	1.263	3.097
YGL036W		0.364	0.110	0.678	1.318	0.851
YGL037C	PNC1	-0.215	-0.069	1.722	2.455	1.090
YGL041C		0.012	-0.053	0.201	0.216	1.331
YGL045W	RIM8	0.083	0.235	0.100	0.692	1.423
YGL046W		0.917	-0.122	0.475	-0.198	1.214
YGL050W	TYW3	0.295	0.122	0.501	-0.596	1.140
YGL053W	PRM8	0.465	0.341	0.896	1.148	1.800
YGL056C	SDS23	0.258	0.497	0.558	0.502	1.040
YGL059W	PKP2	0.629	0.627	1.022	1.487	1.545
YGL062W	PYC1	0.648	1.095	2.013	2.587	1.893
YGL081W		0.284	0.112	0.622	0.233	1.020
YGL085W		0.303	0.189	0.628	-0.479	1.352
YGL088W		0.586	0.072	1.009	-0.265	1.994
YGL095C	VPS45	-0.039	0.106	0.414	1.141	0.639
YGL104C	VPS73	-0.056	0.088	0.941	1.721	1.136
YGL108C		-0.090	0.427	0.368	0.258	1.227
YGL117W		0.606	1.141	1.624	0.671	1.627
YGL121C	GPG1	0.588	0.651	2.971	3.433	3.765
YGL125W	MET13	1.135	1.047	1.768	2.068	1.622
YGL141W	HUL5	0.377	0.288	0.560	1.055	1.112
YGL156W	AMS1	0.347	-0.022	1.304	2.321	2.516
YGL157W		0.374	0.280	1.079	1.284	0.597
YGL164C	YRB30	0.257	0.073	0.539	1.054	0.762
YGL166W	CUP2	0.328		2.293	2.584	3.366
YGL180W	ATG1	0.321	0.032	0.723	2.572	1.802
YGL184C	STR3	2.488	3.887	3.564	4.885	4.269
YGL194C	HOS2	0.504	0.302	0.532	0.860	1.168
YGL208W	SIP2	-0.150	-0.020	0.272	1.118	0.797
YGL215W	CLG1	0.158	0.150	0.437	0.229	1.088
YGL218W		0.107	0.277	0.456	-0.204	1.211
YGL224C	SDT1	0.175	0.181	0.609	-0.304	1.183
YGL227W	VID30	0.839	0.151	1.057	2.041	0.804
YGL240W	DOC1	0.332	0.175	0.518	-0.496	1.304
YGL247W	BRR6	-0.159	-0.238	-0.527	-0.031	1.095
YGL248W	PDE1	0.593	0.856	1.658	2.216	2.266
YGL250W	RMR1	0.081	0.053	0.358	-0.151	1.034
YGL253W	HXK2	0.786	1.078	0.608	0.045	-0.657
YGR008C	STF2	0.730	0.548	1.873	2.904	1.914
YGR019W	UGA1	0.614	0.709	1.392	2.082	1.464
YGR022C		0.297	0.050	0.209	0.397	1.043
YGR023W	MTL1	1.164	0.338	1.274	1.706	2.086

YGR032W	GSC2	-0.293	0.109	0.118	1.738	2.376
YGR042W		0.228	0.039	0.449	-0.094	1.188
YGR043C		0.468	0.141	4.084	4.919	4.859
YGR044C	RME1	0.339	0.129	0.901	1.035	0.643
YGR048W	UFD1	-0.162	-0.166	0.671	1.992	0.595
YGR052W	FMP48	1.542	0.954	2.475	2.697	0.692
YGR053C		0.467	0.204	0.527	-0.001	1.432
YGR055W	MUP1	0.631	1.720	1.406	1.717	1.664
YGR065C	VHT1	0.213	0.830	0.812	1.211	0.645
YGR066C		0.513	0.213	0.713	-0.022	1.705
YGR070W	ROM1	0.458	-0.372	0.712	1.676	1.551
YGR087C	PDC6	0.482	0.629	0.382	2.994	3.962
YGR088W	CTT1	1.138	0.347	2.093	3.103	2.509
YGR092W	DBF2	0.145	0.227	0.449	1.227	0.820
YGR096W	TPC1	0.468	0.304	0.365	0.298	1.204
YGR097W	ASK10	0.625	0.797	0.952	0.915	1.653
YGR100W	MDR1	0.246	-0.473	0.315	1.257	0.608
YGR110W		-0.460	-0.151	0.204	2.083	0.926
YGR120C	COG2	0.160	0.157	0.451	-0.424	1.035
YGR127W		0.576	0.069	1.163	0.991	1.854
YGR136W	LSB1	0.160	0.353	0.920	1.052	0.929
YGR138C	TPO2	0.219	1.119	0.626	1.042	0.835
YGR142W	BTN2	0.877	-0.910	0.956	1.974	0.903
YGR143W	SKN1	0.426	0.283	0.753	1.328	1.033
YGR144W	THI4	0.210	-0.015	0.536	-0.027	1.897
YGR146C		1.628	1.510	1.692	2.573	3.485
YGR147C	NAT2	0.389	0.198	0.631	-0.144	1.079
YGR155W	CYS4	0.497	0.768	0.759	1.017	0.992
YGR161C	RTS3	0.645	0.491	1.253	0.950	1.741
YGR164W		0.371	0.043	0.648	-0.858	1.405
YGR170W	PSD2	0.007	-0.117	0.205	1.100	0.083
YGR174C	CBP4	0.164	0.028	0.261	-0.018	1.427
YGR183C	QCR9	-0.201	0.306	0.639	0.522	1.080
YGR194C	XKS1	0.310	-0.050	1.034	1.771	0.755
YGR200C	ELP2	0.251	0.024	0.739	1.166	0.676
YGR201C		-0.176	0.014	0.461		1.374
YGR204W	ADE3	0.812	0.671	1.282	1.794	1.421
YGR213C	RTA1	0.103	0.162	0.436	-0.340	1.419
YGR226C		0.438	0.244	0.630	-0.635	1.260
YGR230W	BNS1	0.128	-0.124	0.236	-0.521	1.082
YGR233C	PHO81	0.354	0.465	0.710	1.124	1.698
YGR236C	SPG1	0.154	0.087	0.546	-0.593	1.479
YGR237C		0.687	0.125	0.980	1.866	1.137
YGR242W		0.277	-0.060	0.401	-0.214	1.225
YGR243W	FMP43	0.758	0.678	1.038	1.071	0.763
YGR248W	SOL4	-0.679	-0.341	1.893	2.746	1.385
YGR255C	COQ6	-0.035	-0.043	0.621	1.080	0.331
YGR256W	GND2	0.353	0.104	1.029	2.523	2.351
YGR258C	RAD2	0.447	0.187	0.346	1.433	1.134
YGR262C	BUD32	0.276	0.196	0.551	-0.533	1.123

YGR269W		0.666	0.226	0.580	-0.594	2.105
YGR278W	CWC22	0.137	-0.122	-0.374	1.707	
YHL018W		0.479	0.134	0.400	0.302	2.040
YHL021C	AIM17	1.333	0.944	2.681	4.133	2.637
YHL036W	MUP3	1.456	1.850	2.585	5.792	3.769
YHL037C		0.652	0.182	0.467	-0.620	1.611
YHL040C	ARN1	-0.115	0.157	0.094	0.392	1.263
YHL041W		0.923	0.257	0.727	-0.205	2.777
YHL045W		0.604	0.038	0.605	1.369	0.533
YHL047C	ARN2	-0.021	-0.251	-0.071	0.451	1.002
YHR001W-A	QCR10	0.110	-0.334	1.215	0.910	0.869
YHR005C	GPA1	-0.001	0.140	0.392	0.829	1.254
YHR008C	SOD2	0.487	0.473	1.404	1.259	1.262
YHR016C	YSC84	0.083	0.088	0.898	1.683	0.419
YHR018C	ARG4	0.101	0.973	1.463	1.607	0.751
YHR022C		0.630	0.177	0.875	-0.233	1.378
YHR027C	RPN1	-0.134	-0.188	-0.386	1.299	-0.256
YHR030C	SLT2	0.003	0.000	0.436	1.124	0.981
YHR038W	RRF1	0.438	0.154	0.676	-0.431	1.346
YHR046C	INM1	0.522	0.305	0.547	-0.398	1.301
YHR055C	CUP1-2	-0.068	-0.110	0.587	0.225	1.205
YHR062C	RPP1	0.469	0.109	0.386	-0.794	1.401
YHR071W	PCL5	0.486	0.903	1.797	1.417	2.025
YHR080C		-0.010	-0.207	0.494	1.354	0.669
YHR087W		0.717	0.692	3.263	3.669	2.941
YHR090C	YNG2	0.244	0.192	0.555	-0.187	1.119
YHR092C	HXT4	1.011	1.516	0.556	1.479	2.786
YHR095W		0.534	-0.452	0.143	-0.399	2.185
YHR096C	HXT5	0.641		1.023	3.553	2.195
YHR104W	GRE3	-0.299	-0.198	1.363	2.182	1.564
YHR105W	YPT35	0.156	0.113	0.400	-0.531	1.664
YHR106W	TRR2	0.253	0.632	0.774	1.609	1.460
YHR112C		0.556	0.735	1.864	2.771	2.889
YHR113W		0.282	0.005	0.880	1.279	1.001
YHR126C		0.293	0.175	0.544	0.468	1.679
YHR136C	SPL2	0.630	0.280	0.807	-0.350	2.008
YHR138C		0.236	-0.017	0.782	0.631	1.603
YHR140W		-0.276	-0.108	0.510	-0.086	1.212
YHR145C		0.433	0.108	0.622	-0.196	1.626
YHR148W	IMP3	0.085	0.141	0.103	-0.670	1.074
YHR156C	LIN1	0.214	0.055	-0.127	1.296	-0.244
YHR157W	REC104	0.236	0.031	0.514	-0.411	1.426
YHR161C	YAP1801	0.413	0.469	1.073	2.211	1.709
YHR173C		0.431	0.076	0.494	-0.704	1.562
YHR176W	FMO1	0.069		0.969	2.766	2.508
YHR180W		0.522	0.191	0.633	-0.344	1.353
YHR195W	NVJ1	0.419	0.126	0.765	0.522	1.143
YHR198C		0.049	0.001	0.687	0.825	1.043
YHR209W		0.072	-0.179	0.685	1.066	1.311
YHR212C		0.279	0.024	0.302	0.200	1.626

YHR215W	PHO12	1.554	1.622	1.936	1.802	1.640
YIL008W	URM1	0.212	0.067	-0.024	-0.691	1.001
YIL009C-A	EST3	-0.241	0.013	0.627	0.334	1.136
YIL012W		-0.055	-0.066	0.160	-0.632	1.220
YIL015W	BAR1	0.575	0.651	0.872	1.609	1.876
YIL017W		0.634	-0.207	0.642	1.646	0.947
YIL029C		0.263	0.201	0.474	0.092	2.013
YIL033C	BCY1	0.390	0.053	0.384	1.072	0.254
YIL036W	CST6	0.551	0.150	0.755	1.138	1.258
YIL042C	PKP1	0.303	0.156	0.697	0.468	1.046
YIL045W	PIG2	0.384	-0.128	0.815	2.782	1.833
YIL046W	MET30	0.149	0.147	0.654	1.751	2.024
YIL049W	DFG10	-0.080	-0.049	0.488	0.239	1.298
YIL053W	RHR2	0.936	1.342	1.053	-0.214	-0.911
YIL055C		0.180	0.248	1.028	1.730	1.651
YIL056W	VHR1	0.164	0.070	0.419	1.028	0.865
YIL059C		0.301	0.081	0.326	-0.366	1.072
YIL060W		0.183	0.239	0.491	-0.142	1.545
YIL065C	FIS1	0.155	0.044	0.639	0.033	1.097
YIL066C	RNR3	0.372	-0.048	0.406	-0.469	1.100
YIL074C	SER33	0.799	0.865	1.951	3.152	2.360
YIL079C	AIR1	0.000	0.082	-0.017	-0.088	1.495
YIL082W		0.686	0.679	1.145	1.295	2.845
YIL083C		0.835	0.786	0.585		1.927
YIL086C		0.825	0.263	0.084	-0.083	2.361
YIL087C		-0.179	0.282	1.016	1.145	1.409
YIL101C	XBP1	0.695	-0.413	0.773	1.185	0.996
YIL107C	PFK26	-0.065	-0.399	0.454	1.844	1.238
YIL108W		0.241	0.083	0.625	1.080	0.501
YIL112W	HOS4	0.676	1.491	2.060	3.200	3.260
YIL113W	SDP1	-0.606	-1.318		0.498	1.770
YIL116W	HIS5	0.431	0.685	1.285	1.314	1.570
YIL117C	PRM5	0.503	0.523	1.264	1.689	2.236
YIL125W	KGD1	0.172	-0.252	0.482	1.087	0.659
YIL135C	VHS2	0.729	-0.075	0.537	-0.321	1.476
YIL136W	OM45	0.397	0.013	1.190	0.799	1.481
YIL144W	TID3	-0.515	-0.402	0.303	1.187	1.863
YIL152W		0.069	0.301	0.604	1.177	1.022
YIL153W	RRD1	0.095	0.238	0.500	1.238	0.466
YIL154C	IMP2'	0.360	0.307	0.925	1.339	0.224
YIL164C	NIT1	0.135	0.984	1.457	1.797	2.731
YIR002C	MPH1	0.286	-0.270	0.056	1.037	0.735
YIR016W		-0.190	0.140	0.610	1.273	1.096
YIR017C	MET28	1.594	2.383	3.639	4.231	3.726
YIR018W	YAP5	0.475	0.882	1.369		2.252
YIR034C	LYS1	-0.346	0.085	1.183		-0.604
YIR038C	GTT1	-0.302	-0.237	0.407	0.546	1.096
YJL016W		-0.026	-0.338	0.838	2.157	2.288
YJL017W		0.197	0.128	0.804	1.504	2.009
YJL031C	BET4	0.102	0.266	0.544	1.272	0.437

YJL036W	SNX4	0.266	0.049	0.759	1.780	0.396
YJL048C	UBX6	0.720	0.608	1.266	2.351	1.825
YJL053W	PEP8	0.119	0.398	0.698	1.192	0.597
YJL057C	IKS1	0.528	0.104	1.020	2.770	1.839
YJL060W	BNA3	0.839	0.947	1.946	2.604	2.039
YJL066C	MPM1	0.221	0.222	0.948	1.494	1.012
YJL083W	TAX4		0.031	0.381	1.076	0.817
YJL084C	ALY2	0.307	-0.166	0.316	-1.035	1.224
YJL101C	GSH1	0.441	0.482	0.890	1.666	1.241
YJL108C	PRM10	0.281		0.468	1.593	1.198
YJL116C	NCA3	0.899	0.660	1.141	2.062	2.239
YJL141C	YAK1	0.952	0.455	1.439	2.615	2.126
YJL142C	IRC9	0.356	-0.147	1.620	1.886	1.954
YJL144W		0.962		1.429	2.991	1.951
YJL151C	SNA3	0.142	0.158	0.745	0.866	1.098
YJL155C	FBP26	-0.243	-0.551	0.612	2.383	0.660
YJL159W	HSP150	0.693	0.233	1.233	1.786	1.322
YJL161W		-0.110	-0.617	1.167	2.849	2.071
YJL163C		-0.427	-0.666	0.892	1.725	1.063
YJL164C	TPK1	0.678	0.317	1.509	2.538	1.119
YJL165C	HAL5	0.215	0.185	0.378	1.290	0.766
YJL166W	QCR8	0.266	0.328	0.954	1.335	1.290
YJL170C	ASG7	0.893	0.946	2.060	2.823	3.519
YJL185C		-0.066	-0.179	0.380	0.532	1.023
YJL197W	UBP12	-0.210	-0.021	-0.184	1.014	-0.095
YJL212C	OPT1	0.661	0.830	0.691	0.995	1.340
YJL213W		0.735	1.152	1.655	2.370	2.319
YJL217W		0.515	0.721	1.496	1.881	1.750
YJL223C	PAU1	-0.591	0.038	-1.577	1.325	-1.121
YJR008W		0.439	0.323	1.089	1.368	1.014
YJR010W	MET3	2.379	2.278	3.854	5.259	4.395
YJR025C	BNA1	0.437	0.461	1.505	1.610	1.259
YJR029W		0.214	0.110	0.516	1.555	1.050
YJR033C	RAV1	-0.407	-0.199	0.332	1.053	0.662
YJR036C	HUL4	0.466		1.264	2.553	0.459
YJR039W		0.174		-0.037	0.258	1.406
YJR058C	APS2	0.238	0.279	0.479	0.617	1.286
YJR059W	PTK2	0.722	0.323	1.415	1.996	1.317
YJR061W		-0.086	-0.204	-0.012	1.517	0.349
YJR062C	NTA1	0.233	0.279	0.648	1.311	1.385
YJR073C	OPI3	1.065	0.767	1.498	1.249	-0.971
YJR086W	STE18	0.092	0.313	1.068	1.112	1.073
YJR091C	JSN1	0.350	0.154	0.875	1.162	1.503
YJR096W		0.028	-0.068	1.457	2.493	2.295
YJR103W	URA8	0.228	0.020	0.808	1.374	0.602
YJR120W		0.052	0.199	-0.032		2.718
YJR125C	ENT3	-0.003	0.010	0.694	1.191	0.137
YJR135C	MCM22	0.083	0.124	0.471	1.275	0.322
YJR137C	ECM17	1.899	1.572	2.887	4.375	3.696
YJR148W	BAT2	0.064	0.442	1.166	2.350	1.750

YJR149W		-0.444		0.101	2.409	1.606
YJR155W	AAD10	-0.300	1.071	0.611	2.328	2.840
YKL001C	MET14	1.540	2.217	3.759	4.687	4.371
YKL023W		0.493	0.627	0.719	1.213	0.941
YKL026C	GPX1	1.006		1.760	2.975	2.888
YKL035W	UGP1	0.449	-0.140	1.694	2.629	1.945
YKL036C		0.597		1.550	2.901	2.270
YKL043W	PHD1	0.681	0.677	1.058	1.321	1.045
YKL050C		0.024	-0.096	0.074	-0.153	1.002
YKL051W	SFK1	0.191	0.346	0.443	0.735	1.015
YKL066W		0.204	0.200	0.566	1.023	1.198
YKL085W	MDH1	0.748	0.744	1.005	1.617	0.679
YKL091C		-0.038	-0.125	0.706	1.853	1.492
YKL093W	MBR1	0.188	0.041	-0.244		1.425
YKL094W	YJU3	0.089	0.071	0.524	0.899	1.097
YKL100C		0.294	0.239	0.606	1.028	0.863
YKL103C	LAP4	0.112	-0.132	1.571	2.575	1.848
YKL124W	SSH4	0.158	-0.052	0.484	1.352	1.358
YKL133C		-0.132	-0.172	1.038	1.937	1.547
YKL145W	RPT1	0.239	-0.222	0.150	1.069	-0.017
YKL150W	MCR1	0.313	0.255	1.213	1.865	1.854
YKL151C		0.552	0.622	2.189	3.330	3.376
YKL163W	PIR3	0.932	0.151	1.385	3.097	3.469
YKL189W	HYM1	0.635	0.064	1.031	1.894	1.750
YKL195W	MIA40	-0.046	0.218	0.481	1.108	0.161
YKL198C	PTK1	0.463	0.356	0.827	1.251	1.153
YKL199C		0.317	0.430	0.389	1.048	1.308
YKL200C		0.788	0.563	1.233	1.755	2.103
YKL201C	MNN4	0.560	1.056	1.247	2.868	2.529
YKL202W		0.200	0.719	0.997	1.216	1.681
YKL213C	DOA1	0.111	0.185	0.511	1.172	0.539
YKL218C	SRV1	0.115	0.644	0.749	1.416	1.085
YKR011C		0.570	-0.137	1.604	3.349	1.131
YKR016W		0.194	0.268	0.786	1.224	0.593
YKR018C		0.272	0.184	0.418	1.238	0.800
YKR024C	DBP7	-0.522	-0.317	-0.038	0.864	1.157
YKR042W	UTH1	0.781	0.539	1.196	1.313	1.659
YKR049C	FMP46	0.104	0.308	0.822	1.196	1.420
YKR058W	GLG1	0.375	-0.384	0.731	1.967	1.288
YKR069W	MET1	1.670	2.574	2.863	4.390	3.618
YKR075C		0.564	0.843	0.025	0.551	1.883
YKR076W	ECM4	0.011	-0.141	0.821	1.970	2.074
YKR089C	TGL4	0.060	0.173	0.589	1.259	0.878
YKR091W	SRL3	-0.025	0.239	1.036	2.738	1.161
YKR093W	PTR2	0.282	-0.398	0.297	1.456	1.703
YKR096W		0.141	0.117	0.252	1.306	0.703
YKR098C	UBP11	-0.147	-0.390	0.284	1.235	1.188
YLL026W	HSP104	-0.434	-0.429	1.478	3.320	1.040
YLL039C	UBI4	0.096	0.279	1.582	2.400	1.454
YLL040C	VPS13	-0.119	-0.293	-0.067	1.026	0.170

YLL041C	SDH2	0.350	0.283	0.770	1.039	0.102
YLL048C	YBT1	0.265	0.125	0.424	1.452	1.199
YLL055W	YCT1	0.462	0.365	0.837	2.401	3.413
YLL058W		0.185	-0.448	0.651	1.873	1.755
YLL061W	MMP1	0.868	1.878	1.392	2.725	3.296
YLL062C	MHT1	0.559	2.104	1.696	2.969	3.232
YLR001C		-0.195	-0.085	0.465	1.010	0.998
YLR023C	IZH3	0.060	0.225	0.281	0.834	1.286
YLR042C		1.092	1.507	1.745	1.074	1.886
YLR058C	SHM2	0.421	0.055	0.264	0.969	1.390
YLR080W	EMP46	0.302	-0.060	0.774	2.136	1.130
YLR089C	ALT1	0.176	0.325	1.327	2.080	2.592
YLR092W	SUL2	3.006	1.968	4.152	6.425	4.630
YLR094C	GIS3	0.313	0.414	0.492	1.025	1.309
YLR108C		1.309	1.624	1.391	1.607	0.980
YLR120C	YPS1	0.800	0.273	0.890	2.003	1.753
YLR133W	CKI1	0.246	0.009	0.525	1.154	-0.679
YLR136C	TIS11	0.302	0.099	0.703	1.858	2.077
YLR142W	PUT1	-0.217		0.441	2.595	2.478
YLR149C		-0.189	-0.386	0.608	1.604	1.934
YLR151C	PCD1	0.154	-0.208	0.358	1.285	0.439
YLR164W		0.444	-0.088	1.301	1.609	1.386
YLR173W		0.069	0.195	0.193	1.027	0.711
YLR174W	IDP2	-0.184		-0.371	1.329	0.296
YLR177W		0.296	-0.094	0.605	0.992	1.291
YLR178C	TFS1	-0.990	-0.708	2.084	3.167	2.249
YLR180W	SAM1	0.733	0.741	1.012	0.811	0.270
YLR193C	UPS1	0.127	0.284	0.562	0.709	1.109
YLR205C	HMX1	0.471	1.263	1.495	3.674	3.141
YLR225C		0.505	0.475	1.332	2.261	1.429
YLR236C		-0.399	0.356	0.158	-0.484	1.003
YLR240W	VPS34	0.116	-0.069	0.334	1.366	0.766
YLR251W	SYM1	0.247	0.187	1.548	1.868	1.912
YLR252W		-0.050	0.067	0.820	1.192	0.923
YLR257W		0.365	0.209	1.242	1.925	1.455
YLR258W	GSY2	0.510	0.197	1.585	2.304	1.653
YLR267W	BOP2	2.008	2.639	3.329	4.591	3.905
YLR270W	DCS1	0.376	0.112	1.413	2.339	1.778
YLR271W		0.914	0.414	0.936		1.103
YLR272C	YCS4	0.183	-0.193	0.114	1.208	1.986
YLR277C	YSH1	-0.271	-0.171	0.131	0.725	1.078
YLR282C		0.382	0.204	0.242	0.123	1.180
YLR290C		-0.256	-0.075	0.794	0.748	1.016
YLR324W	PEX30	-0.109	-0.175	0.382	1.179	0.548
YLR327C	TMA10	0.287	0.127	0.302	0.472	1.485
YLR331C	JIP3	0.068	0.234	0.151	-0.142	1.078
YLR343W	GAS2	-0.604	-0.424	-0.811	0.232	1.898
YLR345W		0.370	0.443	1.018	2.201	0.992
YLR349W		-0.021	0.434	0.324	1.089	0.670
YLR350W	ORM2	0.694	0.505	1.098	1.521	1.893

YLR356W		-0.175	-0.212	0.894	0.948	1.228
YLR364W	GRX8	0.058	0.250	0.299	0.110	1.541
YLR370C	ARC18	0.130	0.254	0.670	1.003	0.677
YLR382C	NAM2	0.070	-0.160	0.156	0.833	3.777
YLR385C	SWC7	-0.238	0.050	0.154	0.595	1.061
YLR387C	REH1	-0.250	-0.157	0.342	1.107	0.722
YLR414C		0.293	0.260	0.839	1.134	0.660
YLR417W	VPS36	-0.127	-0.206	0.370	1.120	0.489
YLR423C	ATG17	0.049	-0.131	-0.032	1.120	0.403
YLR425W	TUS1	-0.054	-0.040	0.131	0.868	1.093
YLR438W	CAR2	-0.165	0.037	1.105	0.927	1.008
YLR446W		0.236	0.001	0.441	0.732	1.208
YLR454W		-0.249	-0.018	0.154	1.776	0.195
YML004C	GLO1	1.073	0.295	1.538	2.256	1.652
YML035C	AMD1	0.343	0.036	0.329	0.730	1.002
YML054C	CYB2	0.244	0.160	0.681	3.103	2.633
YML057W	CMP2	-0.104	-0.193	0.366	0.725	1.329
YML070W	DAK1	0.301	-0.057	1.255	2.319	1.637
YML091C	RPM2	0.537	0.679	0.907	1.878	1.037
YML100W	TSL1	0.699	0.145	1.601	2.791	1.661
YML112W	CTK3	0.066	0.109	0.665	1.234	0.863
YML117W	NAB6	0.064	0.184	0.514	1.175	0.838
YML117W-a		0.101	0.149	0.775	0.925	1.393
YML118W	NGL3	0.313	0.258	0.821	1.854	0.794
YML120C	NDI1	1.320	0.761	1.656	2.125	1.495
YML123C	PHO84	0.822	1.149	1.442	1.340	3.439
YML128C	MSC1	0.203	-0.289	2.205	3.010	2.519
YML131W		-0.459	-0.086	1.291	2.950	2.526
YMR020W	FMS1	0.200	0.319	0.538	1.147	0.670
YMR030W	RSF1	0.192	-0.159	0.805	1.221	-0.099
YMR035W	IMP2	0.010	0.087	0.340	2.074	-0.124
YMR053C	STB2	0.751		0.808	2.196	0.809
YMR060C	SAM37	-0.406	-0.256	-0.326	1.263	0.070
YMR062C	ECM40	0.236	0.432	1.055	0.870	0.997
YMR065W	KAR5	0.446	0.424	0.467	1.555	1.514
YMR068W	AVO2	0.448	0.367	0.654	0.770	1.808
YMR077C	VPS20	-0.022	0.336	0.474	0.725	1.249
YMR090W		-0.156	-0.082	1.187	1.698	1.896
YMR095C	SNO1	0.484	0.771	1.345	0.752	1.489
YMR096W	SNZ1	0.974	1.223	2.085	2.428	1.734
YMR105C	PGM2	0.732	0.113	2.091	3.631	1.603
YMR110C	HFD1	0.458	0.221	1.316	2.460	1.363
YMR114C		0.129	0.251	0.681	1.427	1.216
YMR115W		-0.073	-0.132	0.299	1.072	0.244
YMR118C		-0.198	-0.265	-0.130	0.175	1.102
YMR120C	ADE17	0.969	0.559	0.372	0.697	1.057
YMR135C	GID8	0.272	-0.048	0.754	1.457	1.478
YMR136W	GAT2	0.508	-0.288	0.989	1.389	1.300
YMR139W	RIM11	0.142	0.089	0.947	1.722	1.147
YMR153W	NUP53	0.484	0.245	0.724	0.761	1.457

YMR160W		0.258	0.203	0.519	1.436	0.348
YMR169C	ALD3	0.611	-0.166	2.811	4.238	3.251
YMR170C	ALD2	0.696	-0.156	2.191	3.785	2.784
YMR171C	EAR1	0.284	0.043	0.232	0.839	1.341
YMR173W	DDR48	0.887	0.337	1.562	2.134	2.198
YMR173W-A		0.403	0.263	1.541	2.190	2.223
YMR181C		0.397	-0.201	0.983	1.871	2.685
YMR195W	ICY1	0.919	1.592	2.310	2.802	2.684
YMR211W	DML1	0.579	0.336	0.666	0.791	1.903
YMR250W	GAD1	0.061	-0.433	1.591	2.428	1.435
YMR251W-A	HOR7	0.366	0.243	1.428	1.693	1.868
YMR253C		-0.097	-0.128	0.392	1.456	0.942
YMR255W	GFD1	0.266	0.529	0.844	1.236	1.264
YMR261C	TPS3	0.020	0.017	1.007	1.700	0.701
YMR262W		-0.263	-0.386	0.515	1.176	1.202
YMR265C		0.483	0.199	0.548	0.557	1.394
YMR271C	URA10	0.133	0.260	0.864	1.280	1.430
YMR284W	YKU70	0.667	0.133	0.826	2.012	0.934
YMR286W	MRPL33	-0.112	-0.049	-0.042		1.002
YMR287C	DSS1	0.456	0.162	0.582	0.438	1.823
YMR288W	HS1155	0.027	-0.161	0.572	-0.778	1.281
YMR291W		1.556	1.063	1.782	2.457	2.634
YMR293C		0.160	0.343	0.004	0.827	1.240
YMR304C-A		-0.085	-0.368	0.011	0.878	1.002
YMR319C	FET4	0.548	0.697	0.316	0.624	1.207
YMR323W	ERR3	-0.020	0.113	-0.140	1.488	2.335
YNL011C		-0.017	0.066	0.750	1.441	1.093
YNL029C	KTR5	0.346	0.256	0.839	1.639	0.904
YNL036W	NCE103	0.739	1.231	2.651	2.924	2.104
YNL045W		0.429	0.051	0.544	1.596	1.361
YNL072W	RNH201	0.615	0.393	0.929	1.400	1.028
YNL077W	APJ1	0.501	-0.006	0.195	1.229	1.325
YNL098C	RAS2	0.431	0.340	0.859	1.353	0.241
YNL107W	YAF9	0.031	0.243	0.002	-0.480	1.455
YNL115C		0.115	-0.030	-0.161	1.412	0.836
YNL117W	MLS1	0.357	0.188	0.548	-0.136	1.361
YNL133C	FYV6	0.023	-0.407	-0.024	-0.214	1.163
YNL134C		0.500	0.513	1.012	1.669	1.387
YNL144C		0.948	0.554	0.526	1.270	1.746
YNL145W	MFA2	0.042	-0.049	0.407	0.709	1.635
YNL157W		0.170	0.124	0.811	0.488	1.276
YNL160W	YGP1	1.270	0.452	2.150	2.861	2.148
YNL191W	DUG3	0.129	0.818	0.630	0.773	1.359
YNL192W	CHS1	-0.007	-0.023	0.319	1.688	1.289
YNL194C			-0.411	1.111	2.234	2.054
YNL195C		-0.727		0.483	1.394	1.564
YNL200C		-0.165	-0.110	1.006	1.899	1.475
YNL208W		-0.053	0.044	0.781	0.979	1.668
YNL220W	ADE12	0.451	0.145	0.516	1.231	0.722
YNL233W	BNI4	0.471	0.073	0.569	0.229	1.401

YNL235C		0.090	-0.053	-0.106	-0.233	1.181
YNL241C	ZWF1	0.559	0.573	1.286	1.895	2.012
YNL259C	ATX1	-0.088	0.262	0.574	0.146	1.093
YNL265C	IST1	-0.032	-0.103	0.655	1.183	1.227
YNL266W		-0.380	0.043	0.533		1.068
YNL274C	GOR1	0.112	0.036	2.145	3.101	2.138
YNL276C		1.012	2.051	2.175	2.450	3.834
YNL277W	MET2	0.521	0.676	1.186	1.970	1.998
YNL279W	PRM1	0.611	0.987	1.037	1.903	3.351
YNL305C		0.132	0.054	1.048	1.663	1.500
YNL325C	FIG4	0.215	-0.275	-0.517	1.539	0.172
YNL331C	AAD14	0.014	0.096	0.053	0.637	1.045
YNL332W	THI12	-1.164		-0.486	1.268	-0.040
YNR001C	CIT1	0.355	0.641	1.226	1.993	1.234
YNR005C		0.021	0.052	0.137		2.049
YNR019W	ARE2	0.536	0.073	0.516	1.753	-0.168
YNR032W	PPG1	0.359	0.025	0.627	0.274	1.163
YNR044W	AGA1	2.149	0.994	1.949	2.745	4.517
YNR062C		0.406	0.037	0.605	-0.328	1.097
YOL016C	CMK2	0.386	-0.297	0.393	1.343	1.579
YOL025W	LAG2	0.378	0.234	0.319	1.077	0.762
YOL032W	OPI10	0.246	-0.074	0.666	1.805	1.286
YOL035C		0.174	0.306	0.646		1.443
YOL036W		0.481	-0.053	0.332	-0.708	1.099
YOL053C-a		0.281	-0.188	3.133	3.125	3.296
YOL053W		-0.127	0.108	-0.204	1.282	0.516
YOL055C	THI20	-0.127	0.293	-0.441	1.136	0.470
YOL058W	ARG1	0.782	0.949	1.069	0.600	-0.436
YOL071W	EMI5	-0.157	0.366	1.020	1.784	1.182
YOL081W	IRA2	-0.276	0.109	0.179	1.114	0.249
YOL082W	ATG19	0.055	-0.095	0.768	1.327	0.718
YOL083W		0.198	-0.026	0.749	1.613	1.073
YOL096C	COQ3	0.171	-0.123	0.247	1.573	0.573
YOL100W	PKH2	0.354	-0.035	0.497	0.994	1.006
YOL110W	SHR5	-0.120	0.260	0.343	0.509	1.114
YOL111C	MDY2	0.796	0.782	1.593	1.955	2.250
YOL119C	MCH4	0.181	0.517	0.896	1.801	1.941
YOL126C	MDH2	0.450	0.279	0.598	1.015	-0.019
YOL133W	HRT1	-0.662	-0.016	0.618	0.570	1.071
YOR003W	YSP3	-0.108	-0.133	-0.916	0.808	2.187
YOR023C	AHC1	0.373	-0.263	0.473	0.815	1.172
YOR027W	STI1	-0.068	-0.444	0.733	1.247	-0.159
YOR028C	CIN5	0.251	0.198	1.794	1.409	
YOR035C	SHE4	0.052	-0.021	0.330	1.393	0.991
YOR036W	PEP12	0.231	0.160	0.968	1.546	1.498
YOR042W	CUE5	0.325	0.000	0.684	1.185	0.326
YOR053W		0.605	0.495	0.340	1.827	0.698
YOR054C	VHS3	1.003	0.404	1.207	2.249	1.521
YOR056C	NOB1	0.237	-0.340	-0.042	-0.378	1.023
YOR077W	RTS2	-0.317	0.043	-0.523	-1.702	1.863

YOR120W	GCY1	1.403	1.646	3.016	4.227	3.373
YOR121C		0.827	1.216	3.212	4.239	3.091
YOR124C	UBP2	-0.121	-0.387	0.517	1.598	0.382
YOR128C	ADE2	0.099	-0.004	0.138	1.076	0.926
YOR130C	ORT1	0.177	0.783	0.986	0.969	1.205
YOR135C	IRC14	0.042	0.559	0.741	1.669	0.975
YOR136W	IDH2	0.362	0.288	0.736	1.480	0.535
YOR152C		-0.748	-0.513	-0.412		1.562
YOR155C	ISN1	0.062	0.117	0.465	1.632	1.009
YOR173W	DCS2	0.286	0.138	1.182	1.809	1.473
YOR178C	GAC1	0.606	0.013	0.232	1.499	1.228
YOR185C	GSP2	-0.308	-0.322	0.478	0.910	1.469
YOR191W	ULS1	-0.051	0.036	-0.051	-0.611	1.430
YOR215C		0.420	0.223	0.970	1.678	1.320
YOR220W		0.496	-0.069	1.316	2.217	1.444
YOR227W		-0.354	-0.423	0.505	1.636	1.184
YOR245C	DGA1	0.213	0.020	0.323	0.858	1.011
YOR259C	RPT4	0.040	-0.095	0.249	1.002	0.167
YOR266W	PNT1	-0.103	0.138	0.091	-0.088	1.029
YOR273C	TPO4	1.227	0.901	1.601	2.048	0.225
YOR285W		-0.115	-0.059	0.520	0.522	1.058
YOR289W		0.508	0.866	2.106	3.197	2.729
YOR292C		0.499	0.588	1.088	1.722	1.855
YOR303W	CPA1	0.375	0.548	0.896	0.824	1.566
YOR347C	PYK2	0.710	0.601	1.399	2.293	0.995
YOR349W	CIN1	0.716	0.185		-0.453	1.277
YOR363C	PIP2	-0.410	-0.335	0.447	0.715	1.063
YOR374W	ALD4	-0.300	-0.240	0.608	1.709	1.195
YOR383C	FIT3	-1.012	-0.840	-0.140	-0.072	1.341
YOR386W	PHR1	0.877	-0.050	1.167	1.668	0.855
YOR393W	ERR1	0.026	0.175	-0.305	0.821	2.053
YPL019C	VTC3	0.503	0.639	0.700	1.079	1.151
YPL024W	RMI1	-0.092	0.002	0.186	-0.855	1.074
YPL033C		0.745		0.648	-0.155	1.826
YPL042C	SSN3	0.257	0.250	0.531	-0.090	1.183
YPL071C		-0.073	0.169	-0.065		1.409
YPL088W		-0.111	0.220	-0.077	0.994	1.182
YPL096W	PNG1	0.230	0.179	0.312	0.374	1.011
YPL111W	CAR1	0.160	0.427	1.165	1.512	1.571
YPL113C		0.362	-0.096	1.238	1.944	1.249
YPL123C	RNY1	0.100	0.138	0.831	1.159	0.951
YPL135W	ISU1	0.270	0.761	1.102	1.596	1.414
YPL144W	POC4	0.417	0.277	0.631	0.149	1.394
YPL150W		-0.037	-0.050	0.049	0.176	1.096
YPL156C	PRM4	0.118	0.502	0.840	1.114	2.109
YPL161C	BEM4	-0.056	-0.208	0.364	1.848	
YPL177C	CUP9	0.036	-0.124	0.227	0.818	1.543
YPL186C	UIP4	0.050	-0.196	0.779	1.824	1.543
YPL188W	POS5	-0.036	0.600	0.308	1.282	1.272
YPL196W	OXR1	0.517	0.249	0.454	1.677	1.423

YPL203W	TPK2	0.225	0.040	0.842	1.379	0.832
YPL205C		0.243	-0.088	0.431		1.179
YPL206C	PGC1	0.498	0.066	0.664	1.269	1.115
YPL222W		-0.081	-0.386	0.187	3.071	1.709
YPL223C	GRE1	2.446		3.291	6.594	6.575
YPL240C	HSP82	-0.323	-0.603	0.275	1.101	-0.907
YPL247C		0.535	-0.155	0.709	1.194	0.628
YPL250C	ICY2	0.315	0.373	1.019	1.181	2.147
YPL260W		0.187	0.015	0.517	1.174	0.800
YPL265W	DIP5	0.204	0.531	0.543	1.846	1.538
YPL271W	ATP15	0.035	0.232	0.738	0.432	1.068
YPL274W	SAM3	1.077	1.943	1.453	2.281	2.310
YPL281C	ERR2	-0.108	0.133	-0.223	1.226	2.181
YPR005C	HAL1	-0.649		0.595	1.557	2.408
YPR026W	ATH1	-0.419		0.301	2.350	1.502
YPR030W	CSR2	0.166	-0.020	0.065		2.266
YPR035W	GLN1	-0.155	0.118	0.273	1.196	0.380
YPR047W	MSF1	0.675	-0.194	0.096		1.013
YPR049C	ATG11	-0.158	0.118	-0.433	0.470	1.377
YPR076W		-0.350	-0.339	-0.687		1.016
YPR081C	GRS2	0.382	0.138	0.503	1.325	0.680
YPR093C	ASR1	0.628	0.600	0.916	1.776	1.426
YPR115W		0.240	-0.046	0.689	1.106	0.799
YPR122W	AXL1	-0.180	0.014	-0.146	0.833	1.128
YPR149W	NCE102	0.233	-0.173	1.113	1.263	0.843
YPR151C	SUE1	-3.551		0.314	2.723	1.520
YPR157W		1.077	0.793	0.791	1.403	
YPR167C	MET16	1.817	1.897	3.267	3.920	3.536
YPR172W		0.116	0.361	0.988	1.331	1.359
YPR178W	PRP4	0.010	0.069	0.569	1.112	0.666
YPR184W	GDB1	-0.230	-0.346	1.489	2.844	2.277

Genes repressed by potassium starvation (log(2) values)

ID	NAME	10min	20min	40min	60min	120 min
YAL003W	EFB1	0.050	0.234	-0.141	-1.045	-0.946
YAL007C	ERP2	-0.071	-0.134	-0.660	-1.348	-1.159
YAL023C	PMT2	-0.316	-0.118	-0.815	-1.437	-1.544
YAL025C	MAK16	0.074	0.032	-0.539	-1.303	-0.267
YAL033W	POP5	-0.119	-0.305	-0.703	-1.370	-0.809
YAL036C	RBG1	0.095	0.077	-0.625	-1.266	-1.089
YAL037C-b		0.223	0.303	0.465	-0.040	-1.182
YAL059W	ECM1	-0.270	-0.496	-1.735	-3.356	-2.202
YAR007C	RFA1	-0.489	-0.853	-0.611	-0.569	-1.195
YAR052C		-0.240	-0.305	-1.001		-0.712
YAR073W	IMD1	-0.092	0.120	-1.191	-2.304	-3.475
YBL002W	HTB2	-0.346	-0.229	-1.557	-3.745	-2.458
YBL003C	HTA2	-0.121	-0.174	-1.469	-3.108	-2.261
YBL004W	UTP20	-0.152	-0.160	-1.498	-2.676	-1.344
YBL008W	HIR1	-1.539	0.114	-1.480		-0.693
YBL018C	POP8	0.039	0.342	-0.138	-2.045	
YBL021C	HAP3	0.105	0.353	-0.523	-1.809	
YBL023C	MCM2	-0.316	-0.805	-0.654	0.338	-1.301
YBL024W	NCL1	-0.194	-0.101	-0.888	-1.415	-1.384
YBL027W	RPL19B	0.488	0.248	-0.182	-1.961	-1.678
YBL028C		0.201	-0.388	-1.349	-2.648	-1.322
YBL032W	HEK2	0.263	0.139	0.103	-0.430	-1.069
YBL035C	POL12	-0.827	-0.961	-1.522	-1.921	-0.984
YBL039C	URA7	-0.578	-0.168	-1.767	-3.243	-2.415
YBL042C	FUI1	-0.873	-0.320	-1.436	-0.955	-1.378
YBL052C	SAS3	-0.464	0.326	-0.466	-0.343	-1.080
YBL055C		-0.052	-0.063	-0.532	-1.144	-0.023
YBL072C	RPS8A	0.126	0.253	-0.070	-1.520	-2.250
YBL081W		-0.320	-0.042	-0.698	-1.517	-1.193
YBL082C	ALG3	-0.048	0.063	-0.638	-1.664	-1.221
YBL083C		0.175	0.331	-0.627	-2.605	
YBL087C	RPL23A	0.264	0.109	-0.283	-1.899	-2.149
YBL092W	RPL32	0.221	0.191	-0.086	-1.678	-2.678
YBL097W	BRN1	-0.189	0.041	-0.156	-1.038	-1.998
YBR009C	HHF1	0.013	-0.060	-1.169	-2.668	-1.742
YBR010W	HHT1	-0.100	-0.019	-0.639	-1.575	-0.957
YBR025C	OLA1	0.096	0.156	-0.208	-0.893	-1.436
YBR029C	CDS1	-0.033	0.016	-0.443		-1.577
YBR030W		-0.371	-0.410	-0.958	-0.618	-1.551
YBR031W	RPL4A	0.164	0.110	-0.256	-1.125	-1.168
YBR034C	HMT1	-0.093	0.046	-1.110	0.147	-0.134
YBR038W	CHS2	-0.148	-0.463	0.218	0.167	-1.686
YBR048W	RPS11B	0.171	0.215	-0.160	-1.847	-2.392
YBR049C	REB1	-0.334	-0.139	-0.579	-0.869	-1.420
YBR061C	TRM7	-0.016	-0.051	-0.183	-1.202	0.513
YBR062C		-0.469	-0.132	-0.552	-1.328	-0.718
YBR064W		-0.227	-0.106	-0.694	-1.679	-0.835

YBR069C	TAT1	-0.810	-0.277	-1.705	-2.771	-1.995
YBR072W	HSP26	-2.915	-1.553	1.164	4.109	4.661
YBR073W	RDH54	-1.205	-1.094	-1.291	-0.708	-1.048
YBR074W		-0.354	-0.475	-0.627	-1.098	-0.452
YBR076W	ECM8	0.393	-0.055	-0.800		-1.231
YBR078W	ECM33	0.039	-0.006	-0.486	-1.478	-1.500
YBR079C	RPG1	0.044	-0.093	-0.421	-1.039	-0.956
YBR084C-A	RPL19A	0.046	0.138	-0.299	-1.604	-2.475
YBR084W	MIS1	0.089	-0.087	-1.142	-2.601	
YBR087W	RFC5	-0.227	-0.390	-0.760	-1.473	-1.119
YBR088C	POL30	-0.718	-1.102	-1.412	-1.242	
YBR089W		-0.930	-1.578	-2.353	-2.345	-2.170
YBR106W	PHO88	0.019	0.064	-0.344	-1.128	-0.790
YBR121C	GRS1	0.173	0.258	-0.174	-0.945	-1.367
YBR135W	CKS1	-0.420	-0.235	-0.682	-1.301	-0.750
YBR141C		-0.414	-0.038	-1.282	-1.426	-0.721
YBR142W	MAK5	-0.215	-0.112	-1.112	-1.352	-0.722
YBR143C	SUP45	0.054	0.054	-0.483	-1.028	-0.835
YBR154C	RPB5	0.105	0.047	-0.393	-1.009	-1.559
YBR155W	CNS1	-0.030	0.312	-0.892	-1.298	-0.552
YBR162C	TOS1	0.151	0.076	-0.276	-1.023	-0.833
YBR181C	RPS6B	0.126	0.227	-0.359	-1.939	-2.563
YBR187W	GDT1	0.111	0.036	-0.319	-1.140	-0.161
YBR189W	RPS9B	0.193	0.219	-0.407	-2.503	-3.051
YBR191W	RPL21A	0.388	0.186	-0.175	-1.988	-2.200
YBR220C		-0.573	-0.233	-0.906	-1.154	-1.382
YBR238C		-0.315	-0.456	-0.647	-1.038	-0.096
YBR242W		-0.119	-0.294	-1.203	-1.914	-0.218
YBR243C	ALG7	-0.289	-0.068	-0.767	-1.707	-1.057
YBR247C	ENP1	-0.247	-0.083	-1.244	-1.852	-0.628
YBR250W	SPO23	-0.381	-0.297	-1.001	-0.025	-0.051
YBR252W	DUT1	-0.222	-0.457	-0.820	-1.746	-1.184
YBR266C	SLM6	-0.091	0.025	-0.388	-1.014	0.308
YBR267W	REI1	-0.103	-0.147	-0.431	-1.404	0.030
YBR271W		-0.511	-0.092	-1.281	-1.748	-0.562
YBR275C	RIF1	-0.655	-0.113	-1.031		-0.897
YBR291C	CTP1	-1.202	-0.427	-0.334	-0.536	-0.624
YBR301W	DAN3	-0.539	0.001	-0.764	-1.191	-1.122
YCL002C		0.323	-0.129	-0.427	-1.321	0.267
YCL003W		-0.016	-0.015	-0.181	-1.064	-0.934
YCL007C		0.119	-0.579	-0.098		-1.017
YCL022C		-0.162	-0.325	-0.202	-1.323	0.309
YCL024W	KCC4	-1.272	-1.840	-2.285	-2.955	-2.004
YCL025C	AGP1	-1.107	-1.450	-0.751	0.259	-0.814
YCL027C-a		-1.174		1.484	3.376	2.629
YCL036W	GFD2	-0.430	-0.023	-2.084	-2.997	-1.899
YCL037C	SRO9	-0.534	-0.139	-0.798	-2.528	-1.571
YCL053C		0.041	-0.004	-0.882	-2.353	-1.136
YCL054W	SPB1	-0.603	-0.280	-1.248	-1.594	-0.842
YCL058C	FYV5	-0.216	0.153	-0.701	-1.337	-0.323

YCL061C	MRC1	-0.508	-0.232	-1.016	-1.249	-0.948
YCL062W		-0.393	-0.436	-0.796	-1.473	-0.269
YCL063W	VAC17	-0.537	-0.407	-0.925	-1.424	-0.731
YCL064C	CHA1	-1.024	-1.553	-2.129	-1.918	-2.974
YCLX02C		-0.015	0.016	-0.789	-1.965	
YCLX04W		-0.033	-0.044	-0.062	-1.176	-0.095
YCR006C		0.048	0.032	-0.295	-1.071	-0.170
YCR016W		0.126	0.247	-0.444	-1.925	-1.490
YCR019W	MAK32	-0.089	0.080	-0.512	-1.718	-1.627
YCR022C		0.006	-0.046	-0.399	-1.504	-1.061
YCR025C		-0.221	-0.119	-0.245	-1.285	-1.378
YCR026C	NPP1	-0.648	-0.282	-1.140		-0.393
YCR029C-a		0.184	0.104	-0.049	-0.813	-1.202
YCR031C	RPS14A	0.042	-0.097	-0.012	-1.227	-1.301
YCR034W	FEN1	-0.216	-0.081	-1.237	-2.321	-2.542
YCR040W	MATALPHA1	-0.189	-0.069	-0.969	-1.927	
YCR043C		-0.452	-0.138	-0.594	-1.454	-1.299
YCR049C		-0.386	0.084	-1.186		-1.006
YCR055C		-0.035	-0.067	-1.151	-2.451	-1.122
YCR058C		-0.262	-0.030	-0.936	-3.586	
YCR065W	HCM1	-0.686	-0.515	-0.755	-1.347	-0.848
YCR072C	RSA4	-0.468	-0.102	-1.138	-2.336	-1.362
YCR084C	TUP1	-0.006	-0.201	-0.289	-1.146	-0.539
YCR087W		0.215	0.033	-0.802	-2.133	-1.325
YCR097Wa		-0.069	-0.072	-0.402	-2.843	-0.152
YCR099C		0.144	0.185		-1.776	-0.187
YCR101C		0.082	-0.051	-0.759	-1.461	0.166
YCR102C		-0.485	0.038	-0.643	-0.366	-1.319
YCR103C		-0.086	-0.141	-0.194	-1.035	-1.169
YCRX04W		0.070	0.019	-0.558	-1.684	-0.595
YCRX05W		0.156	0.056	-0.256	-1.077	-0.360
YCRX06W		-0.202	-0.059	-0.339	-1.129	-0.762
YCRX07W		-0.202	-0.027	-0.696	-1.618	-1.241
YCRX15W		-0.008	-0.098	-0.135	-1.154	-0.694
YCRX16C		0.110	0.013	-0.852	-1.753	-0.856
YCRX20C		-0.424	-0.452	-0.341	-1.696	
YDL003W	MCD1	-1.744	-2.227	-2.531	-2.704	
YDL031W	DBP10	-0.108	-0.157	-0.948	-1.134	-0.299
YDL032W		-0.227	-0.305	-0.077	-1.010	-0.961
YDL036C	PUS9	-0.137	-0.060	-0.842		-1.283
YDL038C		-0.008	-0.078	-0.891	-0.904	-1.004
YDL050C		0.336	0.067	-0.276	-1.578	0.115
YDL051W	LHP1	0.029	0.062	-0.871	-1.875	-1.591
YDL060W	TSR1	-0.448	-0.129	-1.320	-2.021	-0.743
YDL061C	RPS29B	0.388	-0.170	-0.215	-2.001	-1.981
YDL063C		-1.088	-0.218	-1.827	-2.326	
YDL075W	RPL31A	0.299	0.143	-0.207	-1.834	-2.424
YDL076C	RXT3	0.028	-0.014	-0.261	-1.361	-1.388
YDL081C	RPP1A	0.371	-0.083	0.057	-1.075	-1.584
YDL082W	RPL13A	0.207	0.154	-0.308	-1.621	-1.969

YDL083C	RPS16B	0.274	0.178	-0.473	-2.366	-2.859
YDL084W	SUB2	0.153	0.024	-0.261	-0.861	-1.077
YDL101C	DUN1	-0.214	-0.974	-1.437	-0.982	
YDL102W	POL3	-0.332	-0.224	-0.781	-1.063	-0.210
YDL130W	RPP1B	0.100	0.192	0.008	-1.424	-1.447
YDL131W	LYS21	-0.193	0.073	0.169	-0.012	-1.378
YDL136W	RPL35B	0.192	-0.062	-0.332	-1.692	-2.172
YDL148C	NOP14	-0.539	-0.269	-1.301	-2.121	-1.030
YDL153C	SAS10	-0.162	-0.047	-1.167	-2.123	-0.914
YDL156W		-1.336	-0.613	-1.285		-3.486
YDL157C		0.014	-0.165	-0.465	-1.020	-0.672
YDL159W	STE7	-1.005	-0.081	-0.344		0.298
YDL166C	FAP7	-0.264	-0.363	-0.921	-2.399	
YDL167C	NRP1	-0.700	-0.085	-0.738	-1.497	-1.335
YDL170W	UGA3	-2.225	0.642	0.357	0.059	0.659
YDL182W	LYS20	-0.288	0.261	0.322	0.025	-1.371
YDL184C	RPL41A	0.304	-0.004	0.070	-0.974	-1.226
YDL191W	RPL35A	0.154	0.140	-0.350	-1.708	-2.106
YDL192W	ARF1	0.155	0.067	-0.128	-0.870	-1.307
YDL201W	TRM8	0.166	0.082	-0.897	-1.536	-0.614
YDL208W	NHP2	0.088	-0.130	-0.794	-1.899	-1.133
YDL213C	NOP6	0.064	-0.024	-1.041	-1.991	-1.181
YDL219W	DTD1	-0.375	-0.349	-0.654	-0.817	-1.988
YDR012W	RPL4B	0.138	0.161	-0.242	-1.362	-1.277
YDR013W	PSF1	-0.219	-0.426	-0.456	-1.221	0.196
YDR020C		-0.479	0.323	-1.196	-1.091	-0.399
YDR022C	CIS1	-1.335		0.206	1.345	0.771
YDR023W	SES1	0.311	0.221	0.003	-0.591	-1.315
YDR025W	RPS11A	0.038	0.147	-0.354	-2.042	-2.645
YDR037W	KRS1	0.076	0.276	-0.100	-1.055	-1.533
YDR049W		-0.550	-0.152	-0.439	-0.167	-1.223
YDR050C	TPI1	0.224	-0.103	0.296	-0.234	-1.288
YDR060W	MAK21	0.058	-0.247	-1.333	-2.232	-1.450
YDR064W	RPS13	0.086	0.138	-0.346	-1.984	-2.450
YDR083W	RRP8	0.012	0.032	-0.633	-1.086	-1.018
YDR087C	RRP1	-0.087	-0.009	-1.282	-2.292	-0.788
YDR091C	RLI1	-0.326	-0.288	-0.988	-1.363	-0.910
YDR097C	MSH6	-0.422	-0.853	-1.742	-1.917	-1.760
YDR101C	ARX1	-0.509	-0.444	-1.504	-2.539	-1.291
YDR106W	ARP10	-0.597	-0.034	-0.491	-2.103	-1.575
YDR120C	TRM1	-0.502	-0.081	-1.294	-2.046	-0.963
YDR121W	DPB4	-0.499	-0.356	-0.749	-1.071	-0.498
YDR144C	MKC7	-0.581	-0.698	-1.221	-3.571	
YDR181C	SAS4	-0.007	-0.268	-0.335	-1.715	-0.101
YDR184C	ATC1	-0.623	0.051	-1.300	-2.340	-1.041
YDR187C		-0.069	-0.238	-0.726		-1.025
YDR188W	CCT6	-0.256	-0.053	-0.398	-0.338	-1.049
YDR224C	HTB1	-0.199	-0.249	-0.772	-1.820	-1.381
YDR225W	HTA1	-0.168	-0.149	-0.594	-1.493	-1.141
YDR226W	ADK1	0.391	0.098	0.198	-0.519	-1.122

YDR233C	RTN1	-0.058	-0.408	-0.522	-1.159	-0.989
YDR234W	LYS4	-0.598	-0.099	-0.797	-1.275	-1.413
YDR256C	CTA1	-0.249	-0.192	-1.119		-0.051
YDR260C	SWM1	-0.738	-0.374	-0.785		-1.100
YDR300C	PRO1	-0.013	0.268	-0.861	-1.438	-1.199
YDR312W	SSF2	-0.748	-0.223	-1.121	-1.041	-1.265
YDR318W	MCM21	-0.099	-0.038	-0.258	-1.526	-1.460
YDR321W	ASP1	0.109	0.140	-0.259	-0.775	-1.036
YDR324C	UTP4	-0.462	-0.121	-1.337	-1.746	-1.198
YDR341C		-0.009	0.279	-0.344	-0.914	-1.248
YDR361C	BCP1	-0.144	-0.152	-1.076	-2.279	-0.752
YDR367W		-0.175	-0.436	-0.537	-1.970	-1.783
YDR382W	RPP2B	0.449	0.287	-0.123	-1.598	-2.305
YDR384C	ATO3	0.812	0.776	-0.463	-1.074	-0.480
YDR385W	EFT2	0.279	0.306	-0.015	-0.614	-1.457
YDR398W	UTP5	-0.747	-0.306	-1.621	-1.452	
YDR399W	HPT1	-0.217	-0.692	-1.996	-2.359	-0.278
YDR402C	DIT2	-1.019	-0.453	-0.914		-0.573
YDR412W	RRP17	-0.004	-0.025	-0.996	-1.528	-0.779
YDR413C		0.083	0.095		-2.292	-3.002
YDR417C		0.357	0.168	-0.259	-1.790	-2.215
YDR418W	RPL12B	0.154	0.154	-0.297	-1.903	-2.462
YDR425W	SNX41	0.115	0.076	-0.181	-1.651	-1.176
YDR428C	BNA7	0.010	-0.267	-0.588	-1.260	-1.012
YDR429C	TIF35	0.274	-0.084	-0.492	-0.932	-1.059
YDR434W	GPI17	-0.128	0.043	-0.223	-0.756	-1.234
YDR447C	RPS17B	0.262	0.147	-0.342	-1.997	-2.471
YDR449C	UTP6	-0.462	0.189	-1.431	-1.543	-2.094
YDR450W	RPS18A	0.271	-0.430	-0.418	-2.024	-2.669
YDR454C	GUK1	0.094	0.087	-0.145	-1.223	-1.516
YDR465C	RMT2	-0.230	-0.227	-1.157	-2.306	-1.097
YDR471W	RPL27B	0.059	-0.070	-0.618	-2.277	-2.188
YDR492W	IZH1	-0.290	-0.533	-1.172	-1.706	-0.647
YDR496C	PUF6	-0.467	-0.337	-1.517	-2.512	-0.855
YDR500C	RPL37B	0.122	0.158	-0.223	-1.866	-2.060
YDR505C	PSP1	0.004	0.236	-0.035	-0.631	-1.053
YDR507C	GIN4	-1.483	-1.345	-1.889	-2.872	-1.696
YDR508C	GNP1	-0.548	-0.188	-0.750	-0.519	-1.623
YDR528W	HLR1	-0.631	-0.502	-0.561	-1.218	-1.201
YDR538W	PAD1	0.332	0.315	0.253	-0.490	-1.295
YEL003W	GIM4	-0.613	-0.072		-0.902	-1.143
YEL026W	SNU13	0.416	0.183	-0.471	-2.180	-1.457
YEL033W		-0.012	-0.016	-0.301	-1.308	-1.507
YEL034C-a		0.054	-0.123	-0.257	-1.002	-1.334
YEL034W	HYP2	0.040	-0.021	-0.227	-1.163	-1.202
YEL035C	UTR5	-0.119	-0.235	-0.404	-1.141	-1.495
YEL040W	UTR2	-0.575	-0.773	-1.022	-1.847	-2.880
YEL042W	GDA1	-0.191	0.012	-1.044	-1.918	-1.608
YEL046C	GLY1	-0.026	0.205	-0.559	-1.033	-0.926
YEL048C		-0.044	-0.168	-0.509	-1.497	-1.116

YEL053W-a		0.291	-0.300	-0.497	-1.776	-2.247
YEL054C	RPL12A	0.292	0.209	-0.408	-2.154	-2.372
YEL055C	POL5	-0.093	-0.251	-1.025	-1.350	-0.437
YEL061C	CIN8	-0.280	-0.084	-0.528	-1.003	-0.682
YEL065W	SIT1	-1.291	-1.251	-1.796	-2.819	-0.257
YEL066W	HPA3	-0.308	-0.174	-0.582	-1.108	-0.404
YEL068C		-0.069	-0.021	-0.167	-1.243	
YEL073C		0.873	-0.369	0.844	0.130	-1.372
YEL074W		0.004	-0.102	-0.196	-1.036	-1.163
YEL075C		-0.060	-0.078	-0.173	-1.092	-1.150
YER001W	MNN1	-1.345	-0.837	-1.873	-2.471	-1.301
YER003C	PMI40	-0.151	-0.067	-0.665	-1.646	-1.855
YER006W	NUG1	-0.068	0.010	-1.114	-2.581	-1.187
YER009W	NTF2	0.123	0.060	0.011	-0.854	-1.332
YER011W	TIR1	-0.178	-1.815	-0.715	-1.855	-2.776
YER018C	SPC25	-0.556	0.141	-0.622	-1.074	-0.255
YER025W	GCD11	-0.065	0.046	-0.543	-1.284	-1.018
YER026C	CHO1	-0.032	-0.314	-0.406	-0.682	-2.144
YER028C	MIG3	0.223	-0.165	-0.497	-1.313	-0.340
YER031C	YPT31	-0.297	-0.206	-0.271	-0.655	-1.224
YER032W	FIR1	-0.365	-0.496	-0.667	-0.941	-1.037
YER036C	ARB1	-0.173	-0.086	-0.800	-1.468	-1.477
YER043C	SAH1	0.532	0.439	0.159	-0.817	-2.292
YER049W	TPA1	-0.311	-0.100	-0.897	-1.515	-0.704
YER056C	FCY2	-0.501	-0.184	-0.967	-1.043	-0.317
YER056C-A	RPL34A	0.316	0.192	-0.020	-1.501	-1.449
YER064C		-0.523	-0.391	-0.884	-2.093	
YER070W	RNR1	-1.198	-1.942	-2.097	-2.221	-1.555
YER074W	RPS24A	0.204	0.111	-0.164	-1.464	-1.342
YER082C	UTP7	-0.091	0.033	-0.787	-1.342	-1.335
YER086W	ILV1	-0.185	0.382	-0.271	-1.637	-1.048
YER087C-A		-0.037	-0.046	-0.268	-1.301	-0.749
YER102W	RPS8B	0.293	0.225	-0.142	-1.455	-2.305
YER103W	SSA4	-1.982	-0.829	1.721	4.018	2.932
YER110C	KAP123	-0.049	0.010	-0.709	-1.437	-0.384
YER117W	RPL23B	0.275	0.064	-0.159	-1.580	-1.432
YER118C	SHO1	-0.411	-0.283	-0.909	-1.479	-0.964
YER126C	NSA2	0.226	0.284	-0.054	-1.057	0.208
YER127W	LCP5	-0.389	-0.022	-1.254	-1.866	-1.104
YER131W	RPS26B	0.403	0.109	-0.306	-1.776	-2.467
YER142C	MAG1	0.081	0.169	-0.174	-1.466	-1.575
YER145C	FTR1	-1.240	-0.867	-1.727	-2.564	-0.845
YER146W	LSM5	-0.314	-0.257	-0.281	-1.474	-0.849
YER156C		0.116	0.013	-0.720	-1.594	-0.518
YER174C	GRX4	0.368	0.215	0.039	-1.106	0.007
YER183C	FAU1	0.004	0.180	-0.191	-1.211	-1.517
YFL008W	SMC1	-0.717	-0.555	-1.085	-0.280	-0.187
YFL014W	HSP12	-1.729	-1.385	1.171	1.306	1.639
YFL020C	PAU5	-0.457	-0.070	-1.049	0.045	-0.425
YFL025C	BST1	-0.741	-0.257	-0.368	-1.194	-0.937

YFL034C-A	RPL22B	0.068	0.010	-0.751	-1.562	0.099
YFL034W		-0.471	-0.529	-0.396	-1.765	-1.067
YFL058W	THI5	-1.223	0.159	-0.094		1.558
YFL060C	SNO3	0.107	0.113	0.216	-1.009	0.331
YFR001W	LOC1	0.161	-0.132	-0.673	-1.300	-0.232
YFR005C	SAD1	0.252	0.195	0.176	-1.138	-0.896
YFR031C-A	RPL2A	0.292	0.209	-0.243	-2.002	-2.580
YFR032C-A	RPL29	0.066	-0.030	-0.196	-1.452	-2.167
YFR035C		-0.208	-0.177	-0.287	-2.500	-0.638
YFR038W	IRC5	-0.975	-0.412	-0.960	-1.125	-0.826
YGL009C	LEU1	-0.741	0.667	-0.528	-0.780	-1.074
YGL012W	ERG4	-0.441	-0.507	-0.955	-1.377	-0.642
YGL021W	ALK1	-0.261	-0.291	-0.176	-1.234	-1.260
YGL029W	CGR1	0.058	-0.237	-1.031	-1.607	-0.502
YGL030W	RPL30	0.234	0.073	-0.279	-2.042	-2.516
YGL031C	RPL24A	0.268	0.179	-0.188	-1.757	-1.937
YGL055W	OLE1	0.764	0.148	-0.409	-1.396	-0.458
YGL063W	PUS2	-0.330	0.032	-0.438		-1.276
YGL072C		-0.063	0.060	0.091	-1.298	-0.691
YGL076C	RPL7A	0.028	0.204	-0.375	-1.952	-2.765
YGL077C	HNM1	-0.571	-0.518	-1.325	-1.424	-2.299
YGL078C	DBP3	-0.142	0.043	-1.293	-2.012	-1.295
YGL099W	LSG1	-0.279	-0.296	-0.821	-1.356	-0.903
YGL101W		-0.531	-0.536	-1.109	-2.027	-1.740
YGL102C		0.156	0.081	-0.053	-1.600	-2.021
YGL103W	RPL28	0.085	0.153	-0.189	-1.561	-2.003
YGL120C	PRP43	-0.553	-0.099	-1.189	-1.672	-1.673
YGL123W	RPS2	0.350	0.240	-0.372	-2.099	-2.480
YGL135W	RPL1B	0.310	0.097	-0.243	-1.966	-2.310
YGL147C	RPL9A	0.316	0.199	-0.261	-2.387	-3.113
YGL169W	SUA5	-0.164	0.061	-0.705	-1.613	-0.913
YGL171W	ROK1	-0.374	-0.080	-1.070	-1.108	-0.693
YGL189C	RPS26A	0.226	0.144	-0.002	-1.345	-2.118
YGL200C	EMP24	0.031	-0.165	-0.213	-1.014	-0.171
YGL214W		0.086	0.027	-0.208	-1.505	-1.106
YGL225W	VRG4	-0.249	-0.199	-1.118	-2.230	-1.643
YGL245W	GUS1	0.056	0.205	0.034	-0.101	-1.016
YGL255W	ZRT1	0.287	0.366	-1.163	-0.719	-2.380
YGL261C		-0.522	-0.112	-1.368	-0.286	-0.921
YGL263W	COS12	0.511	-0.028		-1.721	-1.586
YGR014W	MSB2	-0.583	-0.309	-0.878	-1.270	-0.423
YGR027C	RPS25A	0.240	0.263	0.005	-1.405	-1.995
YGR034W	RPL26B	0.236	0.109	-0.094	-2.204	-2.354
YGR035C		-0.287	0.287	-0.281	-1.666	-1.066
YGR050C		0.265	0.131	-0.024	-1.390	-1.969
YGR060W	ERG25	-0.566	-0.794	-1.309	-1.966	-0.674
YGR078C	PAC10	0.094	0.179	-0.223	-1.676	-2.105
YGR079W		-1.165	-0.783	-2.142	-2.781	-0.963
YGR081C	SLX9	0.184	0.178	-0.464	-1.000	-0.229
YGR085C	RPL11B	0.262	0.062	-0.133	-1.795	-2.147

YGR094W	VAS1	0.299	0.134	-0.113	-0.639	-1.120
YGR099W	TEL2	-0.390	-0.482	-1.390		-0.775
YGR102C		0.137	0.101	-0.171	-1.662	-1.604
YGR103W	NOP7	-0.437	-0.103	-1.279	-2.662	-1.508
YGR105W	VMA21	-0.062	-0.002	-0.222	-1.178	-1.095
YGR106C		0.063	0.008	-0.137	-1.096	-0.762
YGR108W	CLB1	-0.271	-0.087	-0.467	-1.376	-2.445
YGR118W	RPS23A	0.180	0.092	-0.108	-1.492	-1.754
YGR123C	PPT1	0.087	0.042	-0.754	-2.937	-1.724
YGR124W	ASN2	-0.151	0.102	-0.097	-0.738	-1.270
YGR128C	UTP8	-0.262	-0.204	-1.507	-2.134	-1.716
YGR131W		0.079	-0.186	-1.267	-1.679	-0.989
YGR137W		0.200	0.198	-0.036	-1.218	-1.444
YGR145W	ENP2	-0.126	-0.209	-1.829	-2.823	-1.793
YGR148C	RPL24B	0.235	0.212	-0.007	-1.887	-2.303
YGR152C	RSR1	-0.601	-0.423	-0.567	-1.473	-0.316
YGR159C	NSR1	-0.267	-0.191	-1.931	-3.216	-1.643
YGR160W		0.369	-0.178	-1.755		-0.985
YGR162W	TIF4631	-0.205	-0.002	-0.634	-1.019	-1.181
YGR172C	YIP1	0.085	0.138	-0.148	-1.113	-0.189
YGR173W	RBG2	-0.059	0.121	-0.628	-1.116	-0.726
YGR175C	ERG1	-0.533	-0.221	-0.779	-1.188	-0.756
YGR182C		0.148	0.094	-0.216	-1.521	-1.558
YGR187C	HGH1	-0.159	0.004	-1.068	-1.200	-1.294
YGR189C	CRH1	-0.584	-1.071	-1.096	-1.471	-0.410
YGR211W	ZPR1	0.122	-0.243	-0.688	-1.478	-1.053
YGR214W	RPS0A	0.167	0.294	-0.265	-1.957	-2.752
YGR221C	TOS2	-0.730	-0.649	-1.083	-1.159	-0.757
YGR234W	YHB1	0.259	0.586	-0.179	-1.422	-1.498
YGR245C	SDA1	-0.261	-0.271	-1.448	-2.508	-1.313
YGR272C		-0.234	0.234	-0.418	-1.378	0.298
YGR283C		-0.447	-0.083	-0.994	-2.413	-0.882
YGR295C	COS6	-0.030	0.164	0.033	-1.453	-1.931
YHL001W	RPL14B	0.258	0.056	-0.459	-1.851	-2.069
YHL011C	PRS3	0.183	0.060	-0.586	-1.725	-1.031
YHL020C	OPI1	-0.207	-0.151	-0.396	-0.577	-1.195
YHL022C	SPO11	-0.067	0.341	-0.480		-1.295
YHL028W	WSC4	0.044	-0.642	-0.136	-0.862	-2.444
YHL033C	RPL8A	0.302	0.393	-0.178	-1.744	-2.140
YHL039W		-0.740	-0.352	-1.216	-1.678	-0.826
YHL049C		-0.490	-0.596	-0.775	-0.471	-1.171
YHR010W	RPL27A	0.216	0.110	-0.263	-1.876	-2.088
YHR019C	DED81	0.151	0.296	0.122	-0.758	-1.291
YHR020W		-0.197	0.303	-0.448	-1.330	-0.957
YHR021C	RPS27B	0.379	0.137	-0.041	-1.615	-1.101
YHR045W		-0.244	-0.019	-0.600	-0.216	-1.007
YHR052W	CIC1	-0.137	-0.147	-1.201	-1.682	-1.382
YHR064C	SSZ1	0.133	0.306	0.033	-0.512	-1.148
YHR065C	RRP3	-0.412	-0.303	-0.892	-1.639	-0.813
YHR066W	SSF1	-0.317	-0.135	-1.329	-2.193	-1.314

YHR072W-A	NOP10	0.148	0.114	-0.047	-1.380	
YHR088W	RPF1	0.038	0.021	-0.594	-1.371	-0.050
YHR089C	GAR1	0.313	0.105	-0.655	-2.080	-1.022
YHR109W	CTM1	-0.447	-0.288	-0.586	-2.653	
YHR120W	MSH1	-0.455	-0.168	-1.073	-0.944	-0.881
YHR123W	EPT1	-0.221	-0.187	-0.307	-0.740	-1.345
YHR128W	FUR1	0.060	-0.114	-0.652	-1.322	-0.284
YHR133C	NSG1	-0.224	-0.021	-0.490	-1.290	-0.539
YHR137W	ARO9	-2.745	-1.157	-0.538	-0.340	0.955
YHR141C	RPL42B	0.269	0.060	-0.249	-1.637	-1.455
YHR149C	SKG6	-0.767	-0.721	-1.621	-1.371	-1.942
YHR169W	DBP8	-0.290	-0.204	-1.294	-2.028	-1.297
YHR170W	NMD3	-0.094	0.052	-1.330	-2.534	-1.605
YHR182C-a		0.484	0.459	0.475	-0.059	-1.293
YHR196W	UTP9	-0.560	-0.301	-1.402	-1.895	-1.506
YHR197W	RIX1	-0.311	0.084	-1.348	-2.245	-0.592
YHR203C	RPS4B	0.159	0.328	-0.176	-1.542	-2.610
YHR207C	SET5	-0.095	0.087	-0.628	-1.186	-0.963
YHR216W	IMD2	-0.102	-0.004	-1.271	-2.609	-2.928
YHR218W		-0.649	-0.588	-1.094	0.168	-0.821
YIL011W	TIR3	-0.521	-1.007	-1.886		-1.083
YIL016W	SNL1	-0.042	-0.299	-0.752	-1.363	-0.499
YIL018W	RPL2B	0.252	0.204	-0.216	-1.987	-2.624
YIL051C	MMF1	-0.070	-0.243	-0.503	-1.284	-0.960
YIL052C	RPL34B	0.286	0.223	-0.284	-1.856	-2.030
YIL069C	RPS24B	0.283	0.149	-0.277	-2.095	-2.286
YIL091C		-0.287	-0.068	-1.314	-1.551	-1.155
YIL094C	LYS12	-0.392	0.161	-0.062	-0.905	-1.042
YIL100W		0.072	-0.077	0.015	-1.140	-1.229
YIL104C	SHQ1	-0.388	-0.127	-1.008	-1.644	-0.652
YIL110W		-0.035	-0.017	-0.409	-1.195	-0.676
YIL113W	SDP1	-0.606	-1.318		0.498	1.770
YIL114C	POR2	-0.175	-0.065	-0.105	-1.007	-0.296
YIL123W	SIM1	0.002	-0.027	-0.078	-1.163	-1.008
YIL127C		0.113	-0.019	-0.550	-1.053	-0.111
YIL131C	FKH1	0.356	0.107	-0.495	-2.254	-2.248
YIL133C	RPL16A	0.333	0.018	-0.440	-2.215	-2.028
YIL140W	AXL2	-1.341	-1.126	-1.903	-2.806	-2.074
YIL148W	RPL40A	0.124	0.100	-0.230	-1.905	-2.427
YIL158W		0.190	0.033	-0.286	-2.891	-3.166
YIR022W	SEC11	-0.106	-0.074	-0.190	-1.311	-0.326
YIR026C	YVH1	-0.053	0.014	-1.023	-2.066	-0.783
YJL014W	CCT3	-0.145	-0.074	-0.370	-0.604	-0.999
YJL026W	RNR2	0.012	0.058	-0.043	-0.847	-1.021
YJL034W	KAR2	-0.419	-0.350	-0.275	-0.370	-1.226
YJL050W	MTR4	0.127	-0.173	-1.398	-2.787	-1.423
YJL051W	IRC8	-0.097	-0.578	-0.110		-1.063
YJL069C	UTP18	-0.509	-0.144	-1.292	-1.863	-0.943
YJL073W	JEM1	-0.615	-0.501	-0.961	-1.064	-0.852
YJL074C	SMC3	-0.287	-0.731	-1.808	-1.681	-0.384

YJL080C	SCP160	0.223	0.138	-0.220	-0.545	-1.459
YJL081C	ARP4	-0.381	-0.291	-0.552	-0.867	-1.047
YJL084C	ALY2	0.307	-0.166	0.316	-1.035	1.224
YJL087C	TRL1	-0.133	-0.264	-0.513	-0.475	-1.526
YJL098W	SAP185	-0.089	-0.141	-1.163	-1.002	-0.450
YJL118W		-0.470	-0.062	-0.880	-2.463	-1.927
YJL121C	RPE1	-0.083	0.005	-0.461	-2.028	-1.864
YJL122W	ALB1	-0.135	-0.330	-1.776	-3.655	-2.075
YJL125C	GCD14	-0.570	-0.350	-1.017	-1.703	-0.702
YJL136C	RPS21B	0.104	0.034	-0.259	-1.902	-2.529
YJL137C	GLG2	-0.271	-0.287	0.187	-1.678	-0.568
YJL138C	TIF2	0.307	0.376	0.066	-0.832	-1.334
YJL148W	RPA34	-0.038	-0.325	-1.235	-2.833	-1.579
YJL153C	INO1	0.859	0.141	0.298	0.220	-4.347
YJL158C	CIS3	-0.094	-0.066	-0.540	-1.874	-1.896
YJL167W	ERG20	0.144	-0.012	-0.035	-0.317	-1.166
YJL173C	RFA3	-0.496	-0.393	-1.293	-2.513	-1.332
YJL177W	RPL17B	0.199	0.198	-0.299	-1.971	-2.486
YJL181W		-0.376	-0.753	-1.009	-0.676	-0.609
YJL184W	GON7	0.103	0.182	-0.404	-1.307	-0.474
YJL187C	SWE1	-0.637	-0.784	-0.732	-1.930	-0.251
YJL188C	BUD19	0.210	-0.126	-0.203	-1.821	-2.422
YJL189W	RPL39	0.170	-0.131	-0.181	-1.665	-2.213
YJL190C	RPS22A	0.309	0.071	-0.405	-2.500	-3.208
YJL191W	RPS14B	0.127	0.175	-0.168	-1.673	-1.584
YJL196C	ELO1	-0.262	-0.360	-0.341	-1.261	-1.701
YJL200C	ACO2	-1.059	-0.370	-0.943	-1.455	-2.279
YJL207C	LAA1	-0.426	-0.692	-0.821	-0.417	-1.135
YJL208C	NUC1	-0.493	-0.262	-1.094	-1.515	-1.129
YJL223C	PAU1	-0.591	0.038	-1.577	1.325	-1.121
YJR001W	AVT1	-0.592	-0.752	-0.834	-1.043	-0.279
YJR002W	MPP10	-0.279	0.099	-0.877	-1.224	-0.729
YJR016C	ILV3	-0.265	0.201	-0.443	-1.153	-0.927
YJR024C	MDE1	-0.284	-0.449	-0.850	-1.763	-1.445
YJR041C	URB2	-0.017	-0.211	-0.704	-1.510	-0.332
YJR063W	RPA12	-0.413	-0.278	-0.964	-2.629	-0.655
YJR064W	CCT5	-0.237	-0.229	-0.664	-0.655	-1.162
YJR069C	HAM1	-0.173	-0.008	-0.431	-1.310	-0.976
YJR071W		0.051	-0.116	-1.496	-2.815	-1.995
YJR092W	BUD4	-0.394	-0.430	-0.289	-1.309	-2.439
YJR105W	ADO1	0.257	0.242	0.059	-0.912	-1.482
YJR112W	NNF1	-0.469	-0.115	-0.743		-1.386
YJR118C	ILM1	-0.184	-0.398	-0.737	-1.374	
YJR123W	RPS5	0.223	0.315	-0.111		-2.051
YJR124C		-0.358	-0.078	-0.696	-1.305	-1.373
YJR129C		-0.221	-0.049	-0.798	-0.498	-1.559
YJR136C		-0.249	-0.132	-0.179	-1.045	0.085
YJR143C	PMT4	-0.093	-0.058	-0.425	-1.178	-1.031
YJR145C	RPS4A	0.091	0.267	-0.206	-1.560	-2.585
YJR147W	HMS2	-0.282	0.262	-0.382	-1.164	-0.150

YJR156C	THI11	0.264	-0.025	-0.060	0.274	-1.322
YJR159W	SOR1	-0.305	0.252	-0.500	-0.430	-1.759
YKL004W	AUR1	-0.309	0.070	-0.678	-1.459	-0.596
YKL006W	RPL14A	0.202	0.109	-0.355	-2.166	-2.526
YKL009C		-0.128	-0.271	-0.993	-2.090	-1.131
YKL009W	MRT4	-0.033	-0.186	-0.733	-2.949	-2.023
YKL014C	URB1	-0.098	-0.389	-0.669	-2.008	-0.069
YKL021C	MAK11	-0.058	0.044	-0.733	-1.031	-0.531
YKL045W	PRI2	-0.255	-1.201	-1.110	-0.928	-0.881
YKL056C	TMA19	0.263	0.273	0.181	-1.024	-1.458
YKL078W	DHR2	-0.167	-0.213	-0.366	-1.000	-0.443
YKL081W	TEF4	0.282	0.421	-0.154	-1.388	-2.018
YKL082C	RRP14	-0.245	0.092	-0.762	-1.401	-0.538
YKL084W	HOT13	0.128	0.290	-0.019	-1.537	-0.161
YKL101W	HSL1	-1.190	-0.677	-1.407	-1.833	-1.526
YKL113C	RAD27	-0.693	-1.229	-1.853	-2.200	-1.867
YKL143W	LTV1	-0.097	-0.094	-1.867	-2.898	-1.089
YKL144C	RPC25	-0.253	-0.240	-1.257	-2.306	-0.923
YKL156W	RPS27A	-0.063	-0.193	-0.790	-1.613	-1.387
YKL164C	PIR1	-0.416	0.031	-0.576	-2.169	-0.701
YKL172W	EBP2	-0.069	-0.135	-1.091	-2.268	-1.217
YKL180W	RPL17A	0.049	0.214	-0.019	-1.318	-1.993
YKL181W	PRS1	0.153	0.069	-0.769	-1.692	-1.074
YKL182W	FAS1	0.207	-0.025	-0.108	-0.500	-1.785
YKL191W	DPH2	-0.360	-0.174	-1.306	-2.256	-1.776
YKL205W	LOS1	-0.393	-0.555	-0.656	-1.097	-0.524
YKL216W	URA1	0.242	-0.015	-0.637	-1.067	-1.565
YKR013W	PRY2	-0.699	-0.339	-0.989	-2.439	-0.765
YKR036C	CAF4	-0.003	0.046	-0.081	-0.917	-1.299
YKR037C	SPC34	-0.351	-0.226	-0.466	-1.034	-0.259
YKR039W	GAP1	-1.336	-2.128	-1.253	0.096	-1.062
YKR043C		-0.186	0.207	-0.200	-0.830	-1.080
YKR044W	UIP5	-0.181	0.290	-0.558	-1.104	-0.724
YKR057W	RPS21A	0.220	0.099	-0.342	-2.046	-2.289
YKR059W	TIF1	0.222	0.334	0.067	-0.817	-1.318
YKR081C	RPF2	0.025	-0.159	-1.469	-2.485	-1.568
YKR092C	SRP40	-0.465	-0.340	-1.400	-2.775	-0.976
YKR094C	RPL40B	0.048	0.093	-0.025	-1.412	
YKR099W	BAS1	-0.674	-0.352	-1.259	-0.561	-0.630
YKR104W		-0.121	-0.375	-1.040	-0.194	-0.033
YLL002W	RTT109	-1.105	-0.541	-1.019	-1.666	-1.309
YLL008W	DRS1	-0.022	0.004	-0.279	-1.057	-0.835
YLL011W	SOF1	-0.328	-0.169	-1.226	-1.458	-1.127
YLL014W		0.055	-0.004	-0.193	-1.396	-1.308
YLL017W		-0.012	0.089	-0.401	-1.428	-1.450
YLL021W	SPA2	-0.437	-0.434	-1.111	-1.390	-0.970
YLL022C	HIF1	-0.694	-0.676	-1.468	-1.931	-1.056
YLL028W	TPO1	-0.814	-1.185	-0.790	-0.894	-1.797
YLL030C		-0.373	0.083	-0.651	-0.452	-1.093
YLL034C	RIX7	-0.444	-0.265	-1.661	-1.313	-1.866

YLL044W		0.434	0.299	-0.164	-1.724	-2.551
YLL045C	RPL8B	0.141	0.359	-0.236	-2.147	-1.898
YLL064C		-0.448	0.145	-1.027	-0.391	-1.134
YLL065W		-0.129	-0.043	-0.896		-2.159
YLR003C		-0.225	-0.074	-1.011	-1.775	-0.409
YLR007W	NSE1	-0.639	-0.597	-1.136	-0.639	0.289
YLR008C	PAM18	-0.249	-0.014	-0.526	-1.253	-1.285
YLR009W	RPL24	-0.057	-0.116	-1.233	-1.937	-1.026
YLR017W	MEU1	-0.279	-0.216	-1.131	-2.325	-1.460
YLR029C	RPL15A	0.191	0.197	-0.305	-1.734	-2.259
YLR031W		0.178	0.061	0.029	-0.935	-1.478
YLR037C	DAN2	-0.104	0.117	-0.312	-1.235	-1.147
YLR043C	TRX1	0.140	0.057	0.113	-1.046	-1.771
YLR045C	STU2	-0.255	-0.231	-0.599	-0.727	-1.276
YLR048W	RPS0B	0.189	0.268	-0.294	-1.969	-2.702
YLR049C		-0.961	-0.854	-1.379	-0.724	-0.980
YLR050C		-0.262	-0.383	-0.697	-1.411	-0.366
YLR051C	FCF2	0.083	0.112	-0.540	-1.101	-0.239
YLR056W	ERG3	-1.007	-1.088	-1.530	-2.539	-0.407
YLR061W	RPL22A	0.126	0.091	-0.220	-2.043	-1.883
YLR062C	BUD28	0.260	-0.049	-0.182	-1.901	-2.350
YLR073C		-0.381	-0.153	-1.078	-2.300	-0.766
YLR075W	RPL10	0.223	0.273	-0.073	-1.247	-1.924
YLR076C		0.287	0.187	-0.150	-1.441	-2.264
YLR083C	EMP70	-0.030	0.017	-0.505	-1.156	-0.973
YLR106C	MDN1	-0.460	0.010	-0.432	-1.048	-1.191
YLR111W		0.111	-0.063	-0.191	-1.756	-1.872
YLR112W		-1.241		-0.616	-0.930	-0.748
YLR124W		0.065	0.035	-0.378	-1.962	-1.508
YLR129W	DIP2	-0.541	-0.356	-1.177	-1.545	-1.331
YLR132C		-0.543	-0.739	-0.143		-1.256
YLR137W		-0.255	0.159	-0.467	-2.248	-2.009
YLR140W		0.046	0.040	-0.412	-1.708	-1.417
YLR143W		-0.039	-0.106	-0.149	-0.818	-0.996
YLR146C	SPE4	-0.292	-0.369	-0.993	-1.866	-0.758
YLR147C	SMD3	-0.170	-0.004	-0.308	-1.196	-0.880
YLR150W	STM1	0.295	0.413	0.031	-1.171	-2.246
YLR153C	ACS2	0.026	0.001	-0.192	-0.222	-1.000
YLR154C	RNH203	-0.186	-0.123	-0.362	-1.821	-1.807
YLR156W		-0.228	-0.028	-0.464	-1.628	-1.532
YLR159W		-0.045	-0.004	-0.390	-1.816	-1.762
YLR167W	RPS31	0.223	0.164	-0.176	-1.729	-2.700
YLR172C	DPH5	0.142	0.083	-0.384	-1.564	-0.983
YLR175W	CBF5	0.059	0.196	-0.914	-2.032	-1.630
YLR183C	TOS4	-1.260	-1.449	-2.154	-3.800	-2.194
YLR185W	RPL37A	0.175	0.222	-0.133	-1.790	-2.115
YLR186W	EMG1	-0.267	-0.380	-1.033	-2.104	-1.162
YLR196W	PWP1	-0.305	0.055	-1.210	-2.152	-1.359
YLR197W	SIK1	-0.086	0.067	-0.884	-2.034	-1.809
YLR198C		0.395	0.015	-0.568	-1.904	-1.215

YLR200W	YKE2	-0.135	0.136	-0.246	-0.942	-1.344
YLR202C		-0.059	-0.072	0.075	-1.067	-0.605
YLR212C	TUB4	-0.851	-0.577	-1.332		-1.182
YLR217W		-0.349	-0.049	-0.451	-1.403	-1.431
YLR221C	RSA3	0.044	0.008	-0.765	-1.668	-0.089
YLR222C	UTP13	-0.261	0.125	-1.100	-1.799	-1.806
YLR230W		-0.163	0.103	-0.425	-1.466	-1.746
YLR232W		-0.060	0.094	-0.087	-1.477	-1.214
YLR249W	YEF3	0.241	0.245	-0.326	-1.803	-2.189
YLR254C	NDL1	0.383	0.271	0.615	0.201	-1.864
YLR264W	RPS28B	0.050	0.017	-0.322	-1.884	-1.838
YLR269C		-0.154	-0.016	-0.530	-1.911	-1.699
YLR276C	DBP9	-0.252	-0.100	-1.253	-2.318	-0.992
YLR292C	SEC72	-0.014	0.162	-0.154	-0.981	-1.141
YLR293C	GSP1	0.298	0.037	0.094	-0.742	-1.136
YLR302C		-0.138	0.147	-0.343	-1.225	-0.218
YLR311C		-0.270	0.048	-0.445	-1.840	-1.204
YLR332W	MID2	-1.029	-0.596	-1.129	-1.666	-0.672
YLR333C	RPS25B	0.103	0.174	-0.076	-1.450	-1.945
YLR334C		-0.061	-0.021	-0.079	-1.355	
YLR336C	SGD1	-0.541	-0.180	-1.085		-0.917
YLR339C		0.422	0.328	-0.126	-1.255	-2.144
YLR340W	RPP0	0.189	0.332	-0.053	-1.356	-2.278
YLR346C		-0.201	-0.106	-0.106	-1.286	-0.773
YLR354C	TAL1	0.179	0.201	0.179	-0.574	-1.361
YLR355C	ILV5	-1.032	-0.641	-1.300	-1.750	-0.865
YLR358C		0.218	0.230	-0.070	-1.091	-0.380
YLR365W		0.064	-0.003	-0.230	-1.814	-1.474
YLR372W	SUR4	-0.060	0.036	-0.904	-2.173	-2.026
YLR374C		0.050	0.169	-0.104	-1.222	-1.298
YLR377C	FBP1	-0.476	0.009	-0.587	-1.052	-0.844
YLR378C	SEC61	-0.298	-0.195	-0.504	-1.193	-0.980
YLR388W	RPS29A	0.221	0.020	-0.202	-1.289	-0.259
YLR401C	DUS3	-0.214	0.145	-0.997	-0.610	-0.337
YLR405W	DUS4	-0.348	-0.139	-0.934	-1.423	-1.332
YLR406C	RPL31B	-0.178	-0.547	-0.353	-1.542	-0.898
YLR407W		-0.370	-0.083	-0.504	-1.007	0.186
YLR408C		-0.060	0.018	-0.153	-1.016	-0.587
YLR413W		-0.507	-1.047	-1.248	-2.714	-1.528
YLR415C		-0.024	0.079	-0.255	-1.126	-0.706
YLR428C		0.064	-0.027	-0.242	-1.354	
YLR432W	IMD3	-0.196	-0.054	-1.346	-2.851	-3.054
YLR433C	CNA1	0.103	0.057	-0.134	-1.031	-0.443
YLR441C	RPS1A	0.204	0.271	-0.244	-1.667	-2.252
YLR448W	RPL6B	-0.006	0.210	-0.354	-1.978	-2.501
YLR449W	FPR4	0.185	0.167	-0.674	-1.855	-1.435
YLR451W	LEU3	-0.314	-0.103	-1.269	-1.999	-2.297
YLR453C	RIF2	-0.690	-0.299	-0.739	-1.062	0.262
YLR459W	GAB1	-0.323	-0.324	-0.573	-1.076	-0.696
YLR461W	PAU4	-0.112	0.006	-0.296	-1.165	-0.870

YML008C	ERG6	-0.188	-0.263	-0.585	-0.875	-1.104
YML022W	APT1	0.073	-0.020	-0.626	-1.862	-1.273
YML024W	RPS17A	0.140	0.069	-0.208	-1.901	-2.503
YML027W	YOX1	-1.336	-1.333	-2.058	-4.362	-2.173
YML037C			-0.243	-0.882	-1.091	-0.860
YML043C	RRN11	-0.466	-0.196	-0.929	-1.084	-1.303
YML052W	SUR7	-0.191	-0.493	-0.270	-1.067	-0.997
YML056C	IMD4	-0.349	-0.311	-1.689	-3.092	-2.461
YML060W	OGG1	-0.725	-0.643	-2.024	-2.766	-2.372
YML061C	PIF1	-0.665	-0.792	-0.765		-1.176
YML063W	RPS1B	-0.052	0.260	-0.257	-1.732	-2.753
YML065W	ORC1	-0.341	-0.119	-0.830	-1.194	-1.120
YML073C	RPL6A	0.291	0.160	-0.241	-1.681	-2.477
YML080W	DUS1	-0.538	-0.124	-1.381	-2.590	-1.795
YML082W		-0.178	0.055	-0.229	-1.003	-0.956
YML087C		-0.283	0.150	-0.495	-0.769	-1.159
YML094W	GIM5	-0.039	-0.266	-0.473	-1.763	-0.655
YML096W		-0.426	-0.164	-1.263	-2.011	-0.950
YML102W	CAC2	-0.600	-0.650	-1.318	-2.272	-1.443
YML106W	URA5	0.266	0.249	-0.153	-1.105	-0.857
YML108W		0.027	0.147	-0.427	-1.529	
YML125C	PGA3	-0.014	-0.122	-0.766	-1.442	-0.983
YML126C	ERG13	-0.116	-0.192	-0.463	-0.758	-1.061
YML129C	COX14	0.091	0.072	-0.136	-1.135	-0.772
YMR003W		-0.383	-0.177	-0.938	-2.248	-1.261
YMR006C	PLB2	-0.115	-0.079	-1.033	-1.262	-0.869
YMR007W		-0.058	-0.116	-0.058	-1.048	-0.588
YMR011W	HXT2	0.337	0.469	-1.179	-2.569	-0.377
YMR014W	BUD22	-0.331	-0.014	-1.043	-1.483	-1.042
YMR048W	CSM3	-0.856	-0.661	-0.973	-0.416	-1.220
YMR049C	ERB1	-0.378	-0.232	-1.406	-2.281	-1.751
YMR058W	FET3	-0.906	-0.583	-0.875	-1.909	-0.683
YMR075C-a		-0.052	0.134	-0.417	-1.710	-1.181
YMR086C-a		-0.078	-0.104	-0.026	-1.271	0.225
YMR093W	UTP15	-0.302	-0.035	-0.844	-2.370	-0.331
YMR116C	ASC1	0.323	0.249	-0.147	-1.585	-2.763
YMR117C	SPC24	-0.046	-0.069	-0.473	-1.842	-2.339
YMR121C	RPL15B	0.029	0.327	-0.361	-1.419	-1.980
YMR123W	PKR1	-0.098	0.006	-0.432	-1.340	-0.867
YMR127C	SAS2	-0.303	-0.017	-0.769	-1.184	-0.347
YMR128W	ECM16	0.017	0.030	-0.991	-2.635	
YMR131C	RRB1	-0.079	0.092	-1.171	-3.394	-2.374
YMR137C	PSO2	-0.014	0.063	-0.178	-0.742	-1.047
YMR142C	RPL13B	0.136	0.196	-0.251	-1.915	-2.634
YMR144W		-0.776	-0.616	-1.347	-3.107	-2.117
YMR177W	MMT1	-0.507	-0.165	-0.965	-1.203	-0.618
YMR194W	RPL36A	0.042	-0.024	-0.474	-1.784	-1.878
YMR199W	CLN1	-0.525	-0.415	-1.031	-1.493	-1.335
YMR202W	ERG2	-0.099	0.001	-0.507	-1.221	-0.738
YMR215W	GAS3	-0.389	-0.062	-1.183	-2.051	-2.011

YMR217W	GUA1	0.037	0.271	-0.619	-2.251	-1.625
YMR221C		-0.408	-0.059	-0.764	-1.224	-0.438
YMR231W	PEP5	0.065	0.166	-0.265	-1.091	-1.252
YMR233W	TRI1	0.194	0.090	-0.105	-1.430	-1.583
YMR236W	TAF9	0.121	0.224	-0.236	-1.707	-1.432
YMR239C	RNT1	-0.191	0.078	-1.264	-1.877	-0.487
YMR242C	RPL20A	0.175	0.188	-0.375	-2.203	-2.435
YMR243C	ZRC1	-0.182	-0.123	-0.661	-1.147	-0.557
YMR252C		-0.073	0.120	-0.358	-1.461	-0.932
YMR260C	TIF11	0.093	0.028	-0.074	-0.842	-1.032
YMR269W	TMA23	-0.128	-0.049	-0.835	-1.097	0.334
YMR292W	GOT1	-0.187	-0.251	-0.923	-2.071	-0.794
YMR294W	JNM1	0.214	0.162	0.235	0.071	-1.265
YMR305C	SCW10	-0.313	-0.303	-1.072	-1.993	-0.619
YMR307W	GAS1	-0.338	-0.146	-1.189	-2.267	-2.213
YMR308C	PSE1	-0.101	-0.353	-0.834	-1.001	-0.659
YMR309C	NIP1	0.006	-0.049	-0.367	-1.253	-1.355
YMR310C		0.005	-0.006	-0.527	-1.176	-0.134
YMR321C		0.318	0.267	-0.015	-1.654	-1.257
YNL002C	RLP7	0.134	0.128	-0.807	-1.841	-1.501
YNL010W		0.253	0.152	-0.045	-0.879	-1.071
YNL019C		-0.088	-0.021	-0.231	-1.339	-0.831
YNL030W	HHF2	0.000	0.037	-1.129	-2.170	-1.102
YNL031C	HHT2	0.000	0.141	-0.487	-1.331	-0.883
YNL033W		-0.133	0.065	-0.568	-1.246	-0.312
YNL041C	COG6	0.361	0.240	0.330	-1.873	0.363
YNL042W	BOP3	0.065	-0.037	-0.375	-1.247	-0.505
YNL043C		0.157	-0.169	-0.089	-1.517	-0.695
YNL044W	YIP3	-0.003	-0.262	-0.308	-1.265	-1.000
YNL050C		0.076	0.090	-0.188	-1.016	-0.751
YNL061W	NOP2	-0.471	-0.246	-1.113	-1.914	-1.626
YNL065W	AQR1	-1.590	-1.331	-2.481	-1.679	-2.149
YNL067W	RPL9B	0.286	0.130	-0.411	-1.920	-2.165
YNL069C	RPL16B	0.315	0.239	-0.160	-1.686	-1.775
YNL075W	IMP4	0.092	0.028	-0.219	-1.253	-0.274
YNL087W	TCB2	-0.092	-0.214	-0.893	-1.941	-0.531
YNL088W	TOP2	-0.747	-0.582	-1.025	-0.965	-0.683
YNL089C		-0.274	-0.250	-0.502	-1.467	-0.503
YNL090W	RHO2	-0.426	-0.209	-0.530	-1.596	-0.770
YNL096C	RPS7B	0.159	0.007	-0.753	-2.118	-2.012
YNL110C	NOP15	0.061	0.022	-0.869	-1.828	-1.165
YNL111C	CYB5	-0.364	-0.242	-0.925	-1.950	-0.028
YNL112W	DBP2	-0.713	-0.902	-2.259	-3.255	-1.867
YNL113W	RPC19	0.092	-0.095	-0.651	-2.166	0.087
YNL114C		0.146	-0.107	-0.905	-1.849	-0.127
YNL121C	TOM70	0.023	-0.332	-0.123	-0.433	-1.043
YNL126W	SPC98	-0.843	-0.305	-1.132	-0.446	
YNL132W	KRE33	0.076	-0.210	-1.289	-1.924	-1.380
YNL141W	AAH1	-0.301	-0.436	-1.958	-2.554	-1.905
YNL151C	RPC31	0.084	0.217	-0.462	-1.273	-0.684

YNL162W	RPL42A	0.180	0.143	-0.394	-1.990	-2.121
YNL175C	NOP13	0.013	-0.229	-0.682	-1.033	-0.892
YNL178W	RPS3	0.315	0.222	-0.294	-1.873	-2.259
YNL182C	IPI3	-0.782	-0.294	-1.765	-1.684	-0.754
YNL209W	SSB2	0.300	0.299	-0.277	-1.573	-2.273
YNL216W	RAP1	-0.679	-0.520	-1.163	-1.844	-1.888
YNL228W		-0.237	0.188	-0.345	-1.098	0.438
YNL230C	ELA1	-0.363	0.156	-0.319	-1.132	-0.991
YNL231C	PDR16	-0.405	-0.340	-0.655	-1.165	-1.151
YNL244C	SUI1	0.012	-0.256	-0.352	-1.022	-0.274
YNL247W		-0.096	0.112	-0.360	-1.074	-1.129
YNL251C	NRD1	0.152	0.156	-0.333	-1.738	-2.471
YNL262W	POL2	-0.541	-0.788	-1.622	0.495	-1.119
YNL289W	PCL1	-1.602	-1.136	-2.170	-3.558	-2.519
YNL290W	RFC3	-0.298	-0.112	-0.455	-1.311	-1.395
YNL292W	PUS4	-0.444	-0.159	-0.972	-1.330	-0.947
YNL300W		-0.811	-1.445	-2.153	-4.131	-2.092
YNL301C	RPL18B	0.204	0.109	-0.363	-2.108	-2.439
YNL302C	RPS19B	0.321	0.113	-0.334	-1.851	-2.248
YNL308C	KRI1	-0.057	-0.379	-0.718	-1.198	-0.727
YNL313C		-0.302	-0.284	-0.896	-1.006	-0.487
YNL332W	THI12	-1.164		-0.486	1.268	-0.040
YNL333W	SNZ2	-0.149	0.336	-0.151		-1.105
YNL339C	YRF1-6	0.073	-0.211	-0.122	-0.894	-2.392
YNR009W	NRM1	-0.854	-0.287	-1.267	-6.015	
YNR010W	CSE2	-0.286	0.179	-0.095	-1.057	0.152
YNR015W	SMM1	-0.194	-0.341	-0.361	-0.996	-0.266
YNR016C	ACC1	0.353	0.180	0.059	0.005	-1.913
YNR018W		-0.263	-0.186	-0.552	-1.297	-0.519
YNR024W		0.110	0.168	0.125	-1.072	
YNR025C		-0.250	0.203	-0.116	-1.359	
YNR038W	DBP6	-0.335	0.114	-0.821	-1.658	-0.391
YNR046W	TRM112	0.172	0.150	-0.302	-1.670	-0.051
YNR050C	LYS9	-0.421	-0.224	-0.337	0.100	-1.225
YNR053C	NOG2	-0.826	-0.090	-1.540	-1.903	
YNR054C	ESF2	0.070	-0.088	-0.372	-1.051	-0.145
YNR056C	BIO5	-0.188	0.280	-1.106		0.635
YNR061C		0.075	0.051	-0.501	-1.635	-0.331
YNR076W	PAU6	-0.519	0.171	-1.369	0.094	-0.933
YOL020W	TAT2	-0.458	0.040	-0.728	-1.104	-1.323
YOL026C	MIM1	-1.121	-0.205	0.007	-0.695	0.245
YOL034W	SMC5	-0.489	-0.109	-1.192		-0.500
YOL039W	RPP2A	0.276	0.240	0.083	-1.374	-1.783
YOL040C	RPS15	0.211	0.170	-0.081	-1.536	-2.245
YOL061W	PRS5	-0.241	-0.156	-0.659	-1.034	-0.207
YOL077C	BRX1	0.042	-0.150	-1.503	-3.079	-1.914
YOL080C	REX4	-0.357	-0.012	-1.768	-2.784	-1.922
YOL090W	MSH2	-0.537	-0.701	-0.466	-0.449	-1.111
YOL092W		-0.198	0.002	-0.664	-1.423	-0.581
YOL093W	TRM10	-0.191	0.031	-0.878	-1.443	-0.987

YOL097C	WRS1	-0.063	0.104	-0.365	-1.009	-1.296
YOL102C	TPT1	-0.340	-0.200	-0.561	-1.175	-0.060
YOL109W	ZEO1	0.013	-0.352	-0.510	-1.081	-0.646
YOL120C	RPL18A	0.112	-0.080	-0.150	-1.354	-1.893
YOL124C	TRM11	-0.545	-0.200	-1.852	-2.308	-3.677
YOL125W	TRM13	0.297	0.262	-0.744	-1.554	-0.282
YOL127W	RPL25	0.239	0.157	-0.142	-1.904	-2.659
YOL139C	CDC33	0.230	-0.058	-0.273	-1.017	-1.072
YOL141W	PPM2	-0.187	0.179	-0.753	-1.330	-0.669
YOL146W	PSF3	-0.424	-0.289	-0.963	-1.792	-1.172
YOL154W	ZPS1	-0.045	0.013	-0.558	-2.429	-1.597
YOL157C		-0.329	0.013	-0.798	-0.174	-1.071
YOR004W	UTP23	-0.548	-0.521	-1.956	-2.612	-1.434
YOR016C	ERP4	-0.325	-0.408	-0.805	-1.390	-0.535
YOR021C		0.259	-0.291	-0.674	-1.072	-0.552
YOR025W	HST3	-0.217	-0.363	-0.239	-0.833	-1.050
YOR040W	GLO4	0.085	-0.063	-0.101	-1.340	-1.488
YOR046C	DBP5	-0.114	-0.049	-0.378	-0.368	-1.080
YOR063W	RPL3	0.108	0.237	-0.308	-1.441	-1.942
YOR073W	SGO1	-0.332	-0.357	-1.232	-1.982	-2.283
YOR074C	CDC21	-0.806	-0.675	-1.585	-2.140	-1.842
YOR077W	RTS2	-0.317	0.043	-0.523	-1.702	1.863
YOR078W	BUD21	-0.095	-0.082	-0.954	-1.371	-0.983
YOR083W	WHI5	-0.476	0.045	-0.385	-0.612	-1.226
YOR091W	TMA46	-0.242	-0.105	-0.691	-1.511	-1.182
YOR095C	RKI1	-0.172	0.029	-1.285	-2.642	-1.393
YOR096W	RPS7A	0.230	0.165	-0.310	-1.973	-2.703
YOR101W	RAS1	-0.456	-0.524	-1.484	-2.248	-1.925
YOR108W	LEU9	-0.413	-0.031	-0.788	-1.334	-0.771
YOR133W	EFT1	0.081	0.350	-0.094	-0.674	-1.564
YOR143C	THI80	-0.005	-0.157	-0.682	-0.794	-1.033
YOR144C	ELG1	-0.580	-0.758	-1.158	-2.155	
YOR145C	PNO1	-0.182	-0.242	-1.218	-2.070	-0.499
YOR149C	SMP3	0.070	0.090	-0.278	-1.450	-1.712
YOR153W	PDR5	-0.189	-0.736	-0.468	-1.505	0.012
YOR182C	RPS30B	0.314	0.030	-0.278	-1.788	-1.716
YOR188W	MSB1	-0.405	-0.079	-0.695	-1.227	-0.436
YOR195W	SLK19	-0.091	0.245	-0.291	-0.768	-1.268
YOR204W	DED1	-0.523	-0.517	-1.135	-1.431	-1.797
YOR206W	NOC2	-0.288	0.157		-2.271	-1.391
YOR234C	RPL33B	0.152	0.072	-0.415	-1.900	-2.327
YOR236W	DFR1	-0.009	-0.171	-1.202	-2.560	-0.908
YOR253W	NAT5	-0.202	-0.204	-0.524	-1.469	-0.918
YOR271C	FSF1	0.121	0.089	-0.036	-0.520	-1.108
YOR272W	YTM1	-0.494	-0.197	-1.615	-3.445	-1.479
YOR276W	CAF20	0.242	0.316	-0.133	-1.213	-1.419
YOR277C		0.156	0.032	-0.361	-1.412	-1.170
YOR287C		-0.163	-0.062	-1.348	-1.302	-1.525
YOR294W	RRS1	0.047	-0.063	-0.975	-2.037	-0.744
YOR309C		0.496	0.020	-1.083	-2.495	-2.034

YOR310C	NOP58	-0.228	-0.078	-1.146	-2.445	-1.536
YOR312C	RPL20B	0.213	0.132	-0.525	-2.298	-2.507
YOR324C	FRT1	-0.794	-0.416	-0.577	0.064	-1.020
YOR335C	ALA1	-0.174	0.072	-0.697	-1.272	-1.762
YOR340C	RPA43	-0.124	-0.143	-1.525	-2.448	-1.889
YOR342C		-0.290	-0.414	-1.207	-1.500	0.160
YOR351C	MEK1	-0.192	0.194	-0.217	-1.203	-1.504
YOR361C	PRT1	-0.071	-0.180	-0.691	-1.189	-1.187
YOR369C	RPS12	0.356	0.069	-0.181	-1.490	-2.149
YOR375C	GDH1	-0.333	-0.328	-0.959	-1.347	-1.943
YOR383C	FIT3	-1.012	-0.840	-0.140	-0.072	1.341
YPL007C	TFC8	-0.004	-0.075	-0.427	-1.207	-1.188
YPL012W	RRP12	0.289	0.002	-1.058	-2.077	-0.703
YPL016W	SWI1	-1.244	-1.087	-0.865		-0.385
YPL018W	CTF19	0.008	0.098	-0.069	-1.350	-0.727
YPL037C	EGD1	0.300	0.086	0.134	-0.726	-1.065
YPL043W	NOP4	-0.526	-0.198	-1.139	-1.861	-0.968
YPL044C		-0.341	0.160	-0.623	-2.167	-0.185
YPL051W	ARL3	0.086	0.178	-0.211	-1.418	-1.020
YPL068C		-0.811	-0.123	-0.824	-1.445	-0.307
YPL079W	RPL21B	0.118	-0.399	-0.363	-1.973	-2.516
YPL080C		0.034	0.170		-2.767	-1.026
YPL081W	RPS9A	-0.191	0.130	-0.435	-1.942	-2.298
YPL086C	ELP3	-0.270	-0.038	-1.147	-1.522	
YPL090C	RPS6A	0.244	0.141	-0.396	-1.924	-2.661
YPL093W	NOG1	-0.792	-0.937	-1.795	-2.840	-2.230
YPL094C	SEC62	0.059	0.046	-0.331	-1.303	-0.612
YPL116W	HOS3	-0.023	0.133	-0.110	-1.334	-1.496
YPL126W	NAN1	-0.772	-0.186	-1.291	-2.225	-0.802
YPL127C	HHO1	-0.180	-0.169	-0.409	-1.636	-1.358
YPL131W	RPL5	0.283	0.262	-0.209	-1.799	-2.508
YPL142C		0.202	0.109	-0.170	-1.903	-2.394
YPL143W	RPL33A	0.024	0.081	-0.343	-1.887	-2.329
YPL146C	NOP53	-0.354	-0.237	-1.076	-1.740	-0.591
YPL153C	RAD53	-0.840	-0.573	-1.713	-0.780	-1.142
YPL155C	KIP2	-0.069	-0.097	-0.905	-1.386	-0.888
YPL157W	TGS1	-0.452	0.134	-1.069	-0.828	-0.500
YPL163C	SVS1	-0.832	-1.144	-1.962	-3.420	-2.002
YPL183C	RTT10	0.052	-0.091	-0.891	-1.349	-0.447
YPL198W	RPL7B	0.168	0.068	-0.514	-1.621	-2.320
YPL207W	TYW1	-0.297	-0.013	-0.868	-1.408	-0.476
YPL211W	NIP7	0.109	-0.091	-1.488	-2.275	-1.350
YPL217C	BMS1	-0.020	-0.015	-0.808	-1.051	-0.279
YPL220W	RPL1A	0.134	0.153	-0.419	-2.089	-2.333
YPL226W	NEW1	0.015	-0.423	-1.017	-1.418	-1.145
YPL227C	ALG5	0.212	0.256	-0.002	-0.448	-1.008
YPL233W	NSL1	-0.452	0.068	-0.638	-1.195	-0.203
YPL237W	SUI3	0.226	-0.027	-0.467	-1.222	-0.854
YPL251W		-0.481	0.208	-0.531	-2.169	0.376
YPL255W	BBP1	0.030	0.239	0.174	-0.232	-1.019

YPL256C	CLN2	-0.948	-1.069	-1.450	-1.961	-1.356
YPL267W	ACM1	-0.318	-0.843	-1.094	-1.917	-1.828
YPL272C		0.324	0.083	0.192	-0.261	-1.051
YPL273W	SAM4	-0.096	0.045	-0.371	-1.459	-1.387
YPL275W	FDH2	-0.267	-0.557	-1.013	-0.969	-0.681
YPR009W	SUT2	-1.004	-0.422	-1.149	-1.063	-0.784
YPR010C	RPA135	0.069	-0.199	-1.270	-2.372	-1.330
YPR037C	ERV2	-0.561	-0.404	-1.225	-1.209	-0.516
YPR043W	RPL43A	0.241	-0.260	-0.140	-1.783	-2.483
YPR044C	OPI11	0.243	-0.138	-0.106	-1.835	-2.382
YPR060C	ARO7	-0.004	-0.410	-0.341	-1.179	-1.487
YPR069C	SPE3	-0.109	0.135	-0.004	-0.569	-1.291
YPR074C	TKL1	0.423	0.475	0.261	-0.132	-1.162
YPR080W	TEF1	0.223	0.118	0.181	-0.360	-1.039
YPR095C	SYT1	-0.221	-0.045	-1.286		-0.138
YPR102C	RPL11A	0.133	-0.235	-0.170	-1.751	-2.267
YPR118W	MRI1	-0.157	-0.174	-0.827	-1.320	-1.084
YPR119W	CLB2	0.329	0.034	0.061	-0.278	-2.069
YPR132W	RPS23B	-0.039	0.082	-0.247	-1.590	-1.851
YPR133C	SPN1	-0.076	-0.223	-0.390	-0.096	-1.073
YPR137W	RRP9	-0.325	-0.025	-0.728	-1.181	-0.604
YPR138C	MEP3	-0.869	-1.162	-0.930	-0.866	-0.278
YPR144C	NOC4	-0.213	0.061	-0.903	-1.308	-0.602
YPR145W	ASN1	-0.569	-0.502	-0.332	-0.638	-1.208
YPR151C	SUE1	-3.551		0.314	2.723	1.520
YPR163C	TIF3	0.181	0.215	-0.258	-1.065	-1.242
YPR170C		-0.027	-0.092	-0.147	-1.191	-0.662
YPR174C		-1.292	-0.395	-1.041	-0.766	-0.713
YPR187W	RPO26	-0.292	-0.508	-0.903	-1.664	-1.235

Genes induced in trk1,2 strain

ID	NAME	trk1,2 vs wt
YBL049W	MOH1	2.218
YBL078C	ATG8	1.045
YBR012C		2.441
YBR040W	FIG1	1.056
YBR054W	YRO2	1.867
YBR067C	TIP1	2.236
YBR104W	YMC2	1.224
YBR158W	AMN1	1.198
YBR249C	ARO4	0.998
YCL027W	FUS1	1.135
YCL055W	KAR4	1.149
YCR005C	CIT2	3.043
YDL037C	BSC1	1.912
YDR441C	APT2	1.030
YEL009C	GCN4	1.015
YEL071W	DLD3	2.783
YER042W	MXR1	1.260
YER081W	SER3	2.657
YER159C	BUR6	1.331
YFL058W	THI5	1.069
YFR030W	MET10	1.825
YGL032C	AGA2	1.535
YGL062W	PYC1	1.028
YGL121C	GPG1	1.760
YGL166W	CUP2	1.669
YGL184C	STR3	1.042
YGL255W	ZRT1	2.211
YGL256W	ADH4	1.480
YGR096W	TPC1	2.105
YHR053C	CUP1-1	1.902
YHR055C	CUP1-2	1.966
YHR071W	PCL5	2.516
YHR112C		1.368
YIL116W	HIS5	1.066
YIL117C	PRM5	1.162
YIR017C	MET28	1.275
YJL170C	ASG7	1.910
YJL217W		2.081
YJR010W	MET3	1.690
YJR029W		1.292
YJR078W	BNA2	1.681
YJR137C	ECM17	1.789
YKL001C	MET14	2.522
YKL043W	PHD1	1.573
YKR069W	MET1	1.245
YKR093W	PTR2	1.100
YLL061W	MMP1	0.998
YLR042C		2.454

Genes repressed in trk1,2 strain

ID	NAME	trk1,2 vs wt
YAR028W		-1.259
YAR073W	IMD1	-2.320
YBL042C	FUI1	-1.047
YBR072W	HSP26	-2.707
YBR132C	AGP2	-1.097
YBR149W	ARA1	-1.102
YBR169C	SSE2	-1.077
YBR286W	APE3	-1.122
YCL064C	CHA1	-2.547
YCR004C	YCP4	-1.126
YDR231C	COX20	-1.087
YDR342C	HXT7	-1.141
YEL011W	GLC3	-1.188
YEL039C	CYC7	-1.311
YEL065W	SIT1	-3.599
YEL073C		-1.361
YER001W	MNN1	-1.019
YER145C	FTR1	-2.318
YFL014W	HSP12	-4.315
YFR015C	GSY1	-1.714
YGL055W	OLE1	-1.435
YGL077C	HNM1	-1.951
YGR086C	PIL1	-1.138
YGR108W	CLB1	-1.307
YGR218W	CRM1	-1.038
YGR238C	KEL2	-1.017
YGR248W	SOL4	-1.611
YGR259C		-1.081
YGR260W	TNA1	-1.266
YGR281W	YOR1	-1.650
YHL028W	WSC4	-1.298
YHR096C	HXT5	-1.190
YHR216W	IMD2	-2.003
YIL051C	MMF1	-1.301
YIL087C		-1.338
YIL111W	COX5B	-1.303
YIL121W	QDR2	-1.649
YIL128W	MET18	-1.028
YJL035C	TAD2	-1.266
YJL078C	PRY3	-1.022
YJL153C	INO1	-1.824
YJL210W	PEX2	-1.036
YJR073C	OPI3	-1.141
YJR115W		-1.677
YKL035W	UGP1	-1.193
YKL182W	FAS1	-1.377
YKL216W	URA1	-1.389
YKR039W	GAP1	-2.138

YLR092W	SUL2	1.474	YLL028W	TPO1	-1.031
YLR460C		1.012	YLR112W		-1.102
YML047C	PRM6	1.916	YLR132C		-1.092
YML131W		2.204	YLR178C	TFS1	-1.862
YMR062C	ECM40	1.130	YLR231C	BNA5	-1.347
YMR096W	SNZ1	1.618	YLR354C	TAL1	-1.132
YMR164C	MSS11	1.102	YLR432W	IMD3	-1.844
YNL036W	NCE103	2.161	YML100W	TSL1	-1.925
YNL160W	YGP1	1.109	YML118W	NGL3	-1.235
YNL332W	THI12	1.166	YML123C	PHO84	-5.348
YNR044W	AGA1	1.655	YML128C	MSC1	-1.587
YOL058W	ARG1	1.116	YMR058W	FET3	-2.253
YOL150C		1.309	YMR102C		-1.393
YOR130C	ORT1	1.072	YMR105C	PGM2	-1.905
YOR202W	HIS3	1.127	YMR250W	GAD1	-1.867
YOR247W	SRL1	1.610	YMR316W	DIA1	-1.038
YOR248W		1.567	YNL065W	AQR1	-1.561
YOR292C		1.076	YNL112W	DBP2	-1.583
YOR303W	CPA1	1.465	YNL141W	AAH1	-1.301
YPL156C	PRM4	1.193	YNL170W		-1.139
YPR167C	MET16	2.031	YNL262W	POL2	-1.096
			YOL126C	MDH2	-1.596
			YOL143C	RIB4	-1.005
			YOR153W	PDR5	-1.917
			YOR178C	GAC1	-1.382
			YOR185C	GSP2	-1.523
			YOR273C	TPO4	-1.137
			YPL004C	LSP1	-1.160
			YPL019C	VTC3	-1.810
			YPR149W	NCE102	-1.128